



NEW PLAGUE PERILS FOR REFUGEES

Charities link to fight cholera

More refugees from a East Pakistan is poised to into West Bengal, just as the shows signs of abating. as cholera aid begins to pour into here are fears that the five million face "far worse disasters," IAN WARD from Calcutta.

Oxfam team arrives

With continuing signs that West Bengal's cholera epidemic is abating, administration officials in the most seriously affected district, are now facing the imminent arrival of 50,000 new refugees from East Pakistan.

VE-CHARITY APPEAL LAUNCHED

NATIONAL appeal will be launched today for cholera-stricken refugee camps in India. A meeting of the Disaster Agency Committee, comprising Christian Aid, Warrent, Red Cross and Save the Children, heard reports on conditions in the refugee camps.

DIE IN NINE AMERICAN AIR CRASHES

Our New York Staff six passengers, crew plus pilot died in crashes of nine aircraft in one of the worst three-day periods in aviation history.

PAPKIN SEES LEC TODAY

Mr. Papkin, the Russian Foreign Minister, who is in London unexpectedly today, will see Sir Alec Home, the Foreign Secretary, today.

ADEQUATE VACCINE

Doctors regard the coming arrival of so many refugees from a known cholera infected area as a major threat and are directing a special vaccination effort along the Nadia border to deal with it.

INDEX TO OTHER PAGES

Table with 2 columns: Page, Content. Includes Home News, Foreign News, Arts Notices, Births, Marriages & Deaths, City News, City Prices, Classified Advt Index, Court and Social, Entertainments Guide, Leader Page, Obituary, Personal, Picture Page, Sport, TV and Radio Programmes, Way of the World, Woman's Page, World News Background.



Relief medical supplies for Calcutta being loaded into a Hercules aircraft at Farnborough, Surrey, June 6, 1971.

WHITEHALL PAY OFFER REJECTED

By BLAKE BAKER Industrial Correspondent THE Government made a pay offer of only 7.2 per cent last night to unions representing 200,000 industrial civil servants within hours of agreeing increases of between 10 and 15 per cent for civil servants in clerical grades.

COMPARABLE WAGES

The settlement for nearly 30,000 clerical workers, aimed at keeping their pay in line with comparable outside employment, will increase the total wages bill by about 11.2 per cent.

81,000 WORKERS LESS IN APRIL

Our Industrial Correspondent The number of workers employed in production industries in April was 81,000 lower than in March and totalled 3,605,000.

CUNARD BUYS LUNN

Our Business Correspondent Cunard confirmed yesterday that it was buying the nationalised loss-making Lunenburg travel group from the Transport Holding Company.

Ban likely on river detergent pollution

By BRIAN SILK A TOTAL ban on river-polluting detergents has been agreed in principle by the Confederation of British Industry. The decision will cost "several million pounds."

BRIDGEMEN'S STRIKE JAMS NEW YORK

By IAN BALL in New York NEW YORK had one of its worst traffic jams yesterday after drawbridge operators left 28 of a city's 29 bridges open as a protest against the State legislature's refusal to approve a pension plan.

LABOUR VOTE TO CHALLENGE SPEAKER

By Our Political Correspondent The organisation committee of the Labour party's National Executive last night recommended that the party should in future contest all elections the seat held by the Speaker.

ENGLAND FIGHT TO SAVE TEST

England, forced to follow on 255 runs behind Pakistan in the first Test at Edgbaston yesterday, scored 103 in three wickets to start the final day needing 71 to avoid the innings defeat.

LATE NEWS

Portugal has decided to install a Consul-General in Rhodesia, thus implying recognition of the republic and defying the United Nations ban of March 1970 on all diplomatic missions there.

RUSSIAN SPACE LINK-UP

By FRANK TAYLOR in Moscow

RUSSIA claimed another space first yesterday as the three-man Soyuz-11 spacecraft linked with the orbiting space station Salyut and the crew went aboard.

MOON ORBIT TACTIC

Our Science Correspondent writes: The successful rendezvous, docking and crew transfer from Soyuz-11 to Salyut is a great step forward for Russian cosmonauts, but American astronauts first performed this feat successfully in Apollo 9 in March, 1969.

LABOUR VOTE TO CHALLENGE SPEAKER

By Our Political Correspondent The organisation committee of the Labour party's National Executive last night recommended that the party should in future contest all elections the seat held by the Speaker.

ENGLAND FIGHT TO SAVE TEST

England, forced to follow on 255 runs behind Pakistan in the first Test at Edgbaston yesterday, scored 103 in three wickets to start the final day needing 71 to avoid the innings defeat.

LATE NEWS

Portugal has decided to install a Consul-General in Rhodesia, thus implying recognition of the republic and defying the United Nations ban of March 1970 on all diplomatic missions there.

Rippon gets Six agreement on role of sterling

By WALTER FARR, Common Market Correspondent, in Luxembourg

BRITAIN made a further breakthrough towards entry into the Common Market in negotiations in Luxembourg yesterday by reaching agreement with the Six on the problem of sterling.

CLASH ON DEARER BREAD

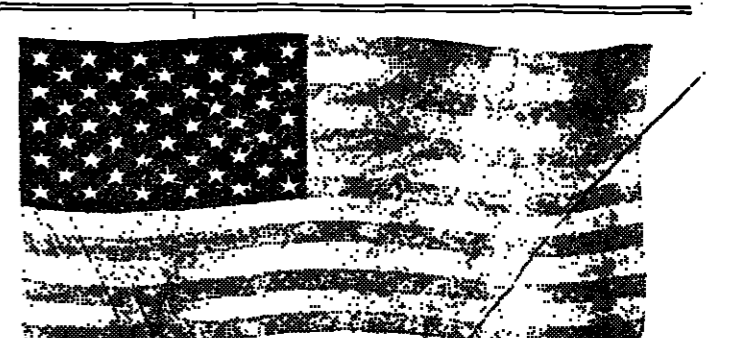
Daily Telegraph Reporter THE Association of Master Bakers yesterday joined the Bakers' Union in predicting an imminent rise in the price of bread.

7 p.c. payment

Britain wanted to pay a three per cent share. The Six talked yesterday in terms of seven per cent "or a little more."

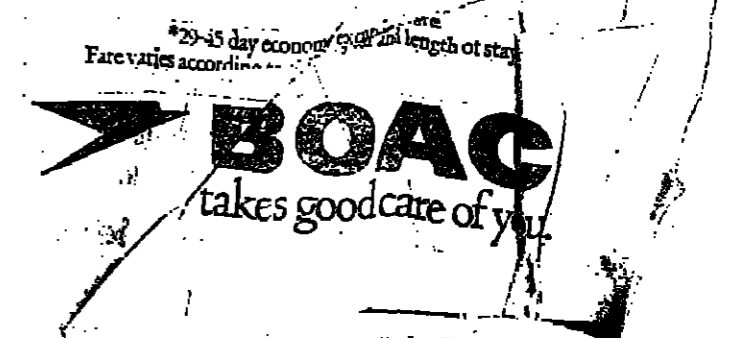
ROAD HAULAGE RATES TO RISE

Road hauliers are expected to increase charges by 5-10 per cent over the next few weeks to meet increasing costs and inflation. The effects will be widespread and affect consumer goods and industry.



THE WASHINGTON DIRECT DAILY

It's a BOAC VC10. It leaves London at 2.15 pm, and arrives at 6.45 pm (local time). Ask your BOAC travel agent to book you on the Washington Direct Daily from £123.75 return.



British Dental Association

'TONIC' POWDER MAY HALT TOOTH DECAY

By JOHN PRINCE, Health Correspondent
Adding a small quantity of a white powder to sweets, bread, beer, milk or other foods and drinks may prevent dental decay, dental scientists believe.

DOCTORS GET RADAR VIEW OF UNBORN

Daily Telegraph Reporter
DOCTORS are now using a form of radar to photograph babies in the womb at only five-and-a-half-weeks' gestation.

Two developments

"Detection of a submarine in the ocean provided a method which, when fully miniaturised, could first detect flaws in metal in engineering practice. It then dealt itself, with a little more sophistication, to the study of the foetus in utero.

Crude picture

"The pictures are displayed on the face of a cathode ray tube, as in radar, providing a crude sort of representation of the baby in utero.

NORTH SEA RIG ON FIRE

Natural gas supplied from the West Sole field in the North Sea was severely reduced yesterday because of a fire aboard the unmanned British Petroleum production Platform A. 44 miles west of the Humber.

SYMPTOMS RELATED

They had observed that eight patients appeared to have rheumatic symptoms related to the use of the pill.

MORE WORK NEEDED

Cause unknown
Our MEDICAL CONSULTANT writes: No relationship, as far as I know, has been demonstrated between contraceptive pills and rheumatoid arthritis.

DETECTIVE ON £3,000 AIL

A private detective, before Harrogate appeared yesterday charged with strating paintings, cash and art objects valued at £30,000 after breaking into a house.

ESTATE AGENT GIVEN APOLOGY BY RACE BOARD

A West Bromwich estate agent who claims that the Race Relations Board "hounded" him during an 18 months' investigation into alleged discrimination, received an apology yesterday.



Rheumatology Congress

ATTACK ON ARTHRITIS TEACHING

Daily Telegraph Reporter
ALTHOUGH millions of people in Britain are known to be suffering from arthritis and rheumatism, some medical schools are not giving any formal training in rheumatology.

Number one disease

It was Britain's "number one disease." Only one person in 50 would escape some form of rheumatism by the time they reached 70.

Cure breakthrough

Four scientists believe they have scored a significant breakthrough in finding a cure for arthritis. Their research was outlined in a paper presented to the congress.

ACCIDENT CLAIM CONCERN BY LAWYERS

By Our Legal Correspondent
A wide inquiry into the effect on a litigant once he has been awarded damages by the courts for an accident is called for in an editorial in the Law Guardian.

ESTATE AGENT GIVEN APOLOGY BY RACE BOARD

A West Bromwich estate agent who claims that the Race Relations Board "hounded" him during an 18 months' investigation into alleged discrimination, received an apology yesterday.

DETECTIVE ON £3,000 AIL

A private detective, before Harrogate appeared yesterday charged with strating paintings, cash and art objects valued at £30,000 after breaking into a house.

ESTATE AGENT GIVEN APOLOGY BY RACE BOARD

A West Bromwich estate agent who claims that the Race Relations Board "hounded" him during an 18 months' investigation into alleged discrimination, received an apology yesterday.

DETECTIVE ON £3,000 AIL

A private detective, before Harrogate appeared yesterday charged with strating paintings, cash and art objects valued at £30,000 after breaking into a house.

Miss Dorothy Fothergill, 46, the first woman director appointed by the Post Office, who took up her new duties yesterday as director of postal personnel at headquarters, King Edward Street, City, talking to staff in the sorting office.

Post Office Engineers

Telephone waiting list longer than ever

DAILY TELEGRAPH REPORTER
THE telephone waiting list is rapidly getting worse, despite a Post Office promise that the backlog would have been cleared completely by now, Mr. Rosser, president of the Post Office Engineers' Association, told 700 delegates at a conference in London yesterday.

Higher incomes

Forecasting a rapid explosion in demand for telephones, Mr. Rosser said the pressure was due to higher incomes, the desire to "keep up with the Joneses" and increased mobility which led to the need for personal telephones.

19 SHIPS IDLE

MANCHESTER Docks was hit by an unofficial strike yesterday which made 19 ships idle. It was the 25th time in the past nine weeks that the men have staged walk-outs over their claims for a basic £37-50 wage without overtime.

COMPANY'S RIGHTS

Effects of notice
OUR LEGAL CORRESPONDENT writes: If a union gives strike notice thought to have the effect of suspending the contracts of employment of each of its members, a company can be legally entitled to refuse to employ those members who appeared for work during a strike of key personnel.

MODERN TOUCH FOR WORKMAN'S BOILER SUIT

The working man is trying to lose the bib-and-brace overalls and boiler-suit image, according to a clothing industry report prepared for the National Economic Development Committee.

COUPLE KILLED

Mr James Halborough, 68, of Abbott Street, Long Eaton, Derbyshire, and his wife, Beatrice, 60, were killed in a three-vehicle collision on a bridge at Ilkeston yesterday.

CALL FOR IPC STRIKE BALLOT

By BLAKE BAKER, Industrial Correspondent
CALLS for a ballot of 1,800 journalists employed on magazine and book production by International Publishing Corporation on the wages strike called by the National Union of Journalists from June 22 are expected to be made today.

A meeting of all chapsels (office sections) of the union has been called to report on developments in the dispute. Although the strike call was approved almost unanimously by nearly 500 journalists, many others are expressing disquiet.

£465 rise demanded

The union is seeking an all-round rise of not less than 465. He hopes to be a year, a grading structure, three annual increments of £150 on the electoral year, five weeks' holiday, and by the end of shorter training, as well as 1972, and for the district minimum for trained staff following August.

Industrial News

VITAL TALKS ON LEYLAND PAY DISPUTE

By ALAN HUGHES, Industrial Staff
A VITAL meeting of 147 skilled maintenance men, on unofficial strike for four days at British Leyland's Cowley, Oxford, complex, is to be held today.

Selective strike

A circular from the union's Periodical and Book branch has informed members that strike action will be selective against a few profitable weeklies. There was no intention of hitting all publications.

£40 demanded

The maintenance men are demanding the £40 for 40 hours which plant electricians earn but they are not prepared to accept some of the productivity concessions agreed by the electricians.

Closures opportune

With the current rationalisation in IP's diverse divisions, aimed at cutting out loss-making activities, it would be surprising if the Corporation did not seize the opportunity to end a few more.

25 SHIPS IDLE

MANCHESTER Docks was hit by an unofficial strike yesterday which made 25 ships idle. It was the 25th time in the past nine weeks that the men have staged walk-outs over their claims for a basic £37-50 wage without overtime.

FACE REVOLT ON PAY CLAIM

Leaders of the National and Local Government Officers Association face a revolt among members at their conference on June 21 because they have failed to reach agreement on a 14 per cent pay claim submitted in April.

COUPLE KILLED

Mr James Halborough, 68, of Abbott Street, Long Eaton, Derbyshire, and his wife, Beatrice, 60, were killed in a three-vehicle collision on a bridge at Ilkeston yesterday.

Tight time-table council change worries agents

By DAVID HARRIS, Political Staff
AGENTS and organisers of the three political parties are worried about Government's tight time-table for local government reorganisation. Under present proposals they will not know the electoral areas until three months before polling.

Agents will present proposals, including selection of candidates. It will also make a judgement in advance of the electoral arrangements. Mr Maudling, however, has admitted that "little enough" local preparation for district council elections held in 1973.

Commission on Local Authorities

Local authorities are also concerned. The Commission on Local Authorities is pressing for an immediate set up of the proposed Government Boundary Commission. The commission will make recommendations on the new districts, which will normally have a population of over 40,000. It will consider amalgamation schemes from existing councils.

Monopolies condemned

He points out that what "fashion" was given as most common non-ratification for the merger boom 1967-68. It might now be fashionable to deride merger although they could be successful.

3 p.c. DROP IN ROAD TOLL

By Our Motoring Staff
There were 26,200 road casualties during April, three per cent fewer than the same month last year, according to provisional figures issued yesterday by the Department of the Environment.

Cholera is threatening Calcutta

For God's sake, Care Says Major Gardiner, Salvation Army Centre Calcutta
"Cholera has already struck the refugee camps outside Calcutta. It's threatening now to sweep through the streets of the city. From the Salvation Army Centre here in Calcutta we're feeding 3,500 a day. Treating TB as usual. Waiting for perhaps the worst epidemic in Calcutta's history. For God's Sake, you've got to help us."

Dear Salvation Army

Rush this money to Major Gardiner's Social Centre, in Calcutta
Name
Address

THE SALVATION ARMY

101 Queen Victoria St., London EC4P 4EP. Cheques, P.O. payable to the Salvation Army.

Can you afford 4 fuel bills a year? See page 3.

Shell-Mex and B.P. central heating brochure advertisement with contact information and logo.

Advertisement for Shell-Mex and B.P. Central Heating with Arabic text at the bottom.

SEX PROBLEMS

ADVICE FOR CHILDREN

JOHN IZBICKI, Education Correspondent
VICE on sex problems and other anxieties is being given to schoolchildren by specially-trained marriage guidance counsellors.

RIGHT TO BAN URGED FOR TEACHERS

By DAVID FLETCHER
TEACHERS must have the right to insist that pupils are put out of school once the leaving age is raised next year to the National Association of Schoolmasters said yesterday.

Terrance Casey, general secretary of the teachers' union, said teachers in secondary schools had a tough job. It was an impossible task to raise the leaving age without a result of a higher grade.

Just support our membership in the classroom. If the school discipline is not maintained, the N.A.S. must challenge the school discipline in court.

reluctant fifth-formers discontinue their more advanced classes, the school will support the decision in insisting that the pupils be put out of school.

Casey, writing in his journal, the New Schoolmaster, questions the plan of raising the leaving age. He says it makes some sense in the political game, but members of the National Association of Schoolmasters are not social reformers. They are experienced schoolmasters who know a damn sight more about the raising of the leaving age than the self-appointed experts put together.

Casey adds, in a reference to the Croynon essay, that there is little hope for order in the schools if a naughty boy sent home from school is to be transformed into a television personality.

Parachute effects killed sergeant
Defects in his parachute caused an RAF sergeant to die last week.

Clive Jenkins home raided
An eight-day ball clock bought a few weeks ago by Mr Clive Jenkins, general secretary of the Association of Scientific, Technical and Managerial Staffs, was stolen from his weekend cottage at Mutter Row, Old Harlow, Essex, at the weekend, it was disclosed yesterday.

Price of hearing aids
White, the popular hearing Director of a well-known hearing aid consultant in his Kingston office recently said he had heard of hearing aid seem reluctant to ask for a hearing aid. He said I think that reluctance is caused by their not knowing the price of a modern hearing aid. He went on to explain the wide range of prices now available for hearing aids.

White nets bomb
A bomb disposal squad used in yesterday to deal with a 2,000lb bomb netted by a dingy brawler, Margaret, less than a mile off the Clacton, Essex. The hearing aid by 2ft, was to a buoy.

Clive Jenkins home raided
An eight-day ball clock bought a few weeks ago by Mr Clive Jenkins, general secretary of the Association of Scientific, Technical and Managerial Staffs, was stolen from his weekend cottage at Mutter Row, Old Harlow, Essex, at the weekend, it was disclosed yesterday.

White nets bomb
A bomb disposal squad used in yesterday to deal with a 2,000lb bomb netted by a dingy brawler, Margaret, less than a mile off the Clacton, Essex. The hearing aid by 2ft, was to a buoy.

White nets bomb
A bomb disposal squad used in yesterday to deal with a 2,000lb bomb netted by a dingy brawler, Margaret, less than a mile off the Clacton, Essex. The hearing aid by 2ft, was to a buoy.

White nets bomb
A bomb disposal squad used in yesterday to deal with a 2,000lb bomb netted by a dingy brawler, Margaret, less than a mile off the Clacton, Essex. The hearing aid by 2ft, was to a buoy.

White nets bomb
A bomb disposal squad used in yesterday to deal with a 2,000lb bomb netted by a dingy brawler, Margaret, less than a mile off the Clacton, Essex. The hearing aid by 2ft, was to a buoy.



GROUP TO KEEP £3,000

By JOHN KEMP, Social Services Correspondent

THE World Council of Churches will not try to recover a grant of £3,000 given to the London West Indian Standing Conference, even though it was spent on projects other than those intended.

The money, which was for help with educational research, buying black power headquarters and paying a full-time organiser, has been used instead for other projects, including a campaign against the Government's Immigration Bill.

Mr Baldwin Sjollem, head of the council's Programme to Combat Racism, said in a letter to the council yesterday: "There is no question of recalling this money, which was not tied to particular projects."

Mr Baldwin Sjollem, head of the council's Programme to Combat Racism, said in a letter to the council yesterday: "There is no question of recalling this money, which was not tied to particular projects."

Only one rule
The conference was free to use the cash for any humanitarian or social projects. The one rule and that is that the money should not be used for any military purpose, and this obviously does not apply here.

On Sunday Mr Len Dyke, chairman of the conference, said that about half of the £3,000 had already been spent. Some of the money had been used to give grants to coloured candidates at municipal elections.

Mr Joe Hunt, secretary of the conference, said yesterday: "I am pleased to hear the World Council of Churches has permitted the complete answer to those who have accused us of misusing the grant."

AMATEUR RIDER ON £10,000 BAIL FOR 3 MONTHS
David Crossley-Cooke, 32, a former amateur steeplechase rider, was further remanded on £10,000 bail until Sept. 13 at Guildhall yesterday, accused of fraud and conspiracy. Crossley-Cooke, of Springfield House, Aston Tirrold, Berks, is charged with fraudulently converting a cheque for £13,297.

SISTERS LEFT PROPERTY TO EACH OTHER
Two elderly sisters found dead together, sitting in their favourite armchairs, had left their property to each other, it was disclosed in their wills, published yesterday.

GIRL IN BOX WAS SUFFOCATED
Diana Morris, five, of Leicester, whose body was found in a tea chest on Thursday, was suffocated with a pair of child's pants, Dr Victor Hugh, pathologist, said at the inquest yesterday.

Other Wills—P8

Boy friend worries hit bank girl's efficiency

PRODUCTIVITY may suffer if the girl behind a bank counter has boy friend trouble, Mr Eric Faulkner, chairman of Lloyds Bank, said at a London conference yesterday.

The bank's staff managers had to tackle personnel problems of the staff.

Lady welfare officers form a sort of flying squad at call when occasionally the mini-skirts fall out with each other, or with the manager, or even with their mums. Boyfriend trouble is an enemy of productivity.

Mr Faulkner, who was speaking at an Industrial Society conference, said: "Communications in the City," said Lloyds employs 17,000 women in a total force of 35,000.

Communications problem
The communications problem for the bank was to set reasons for decisions "to our front-line troops manning our 2,500 counters, many of whose battle dress is a mini-skirt."

The solution was to keep down the number of subordinates who answered direct to someone in a position of responsibility. The Army learned this the hard way. They have never forgotten the lesson. We in City Street must not, either.

The man with responsibility should be obliged to leave the "bump" and move about his "parish" as much as possible.

Computers criticised
Sir Peter Stubb, the Lord Mayor, criticised reliance on computers for communications.

He said: "I believe at last we are beginning to recognise that computers, and all the other miraculous aids which science and research are making available to us at a headlong pace, have IQ ratings of zero."

SISTERS LEFT PROPERTY TO EACH OTHER
Two elderly sisters found dead together, sitting in their favourite armchairs, had left their property to each other, it was disclosed in their wills, published yesterday.

GIRL IN BOX WAS SUFFOCATED
Diana Morris, five, of Leicester, whose body was found in a tea chest on Thursday, was suffocated with a pair of child's pants, Dr Victor Hugh, pathologist, said at the inquest yesterday.

Other Wills—P8

GIRL IN BOX WAS SUFFOCATED
Diana Morris, five, of Leicester, whose body was found in a tea chest on Thursday, was suffocated with a pair of child's pants, Dr Victor Hugh, pathologist, said at the inquest yesterday.

Other Wills—P8

GIRL IN BOX WAS SUFFOCATED
Diana Morris, five, of Leicester, whose body was found in a tea chest on Thursday, was suffocated with a pair of child's pants, Dr Victor Hugh, pathologist, said at the inquest yesterday.

Other Wills—P8

GIRL IN BOX WAS SUFFOCATED
Diana Morris, five, of Leicester, whose body was found in a tea chest on Thursday, was suffocated with a pair of child's pants, Dr Victor Hugh, pathologist, said at the inquest yesterday.

QUEUE FOR HOUSE BARGAINS

Daily Telegraph Reporter
WOULD-BE house-buyers have been queuing offices at Penzance, Cornwall, since Saturday morning to make sure of a bargain when 18 plots go on offer today.

Some have taken it in turn with relatives to sleep in nearby cars or on the pavement. The site for bungalows and semi-detached houses, ranging from £4,400 to £5,300, is at Boscatone Park, Heamoor, on the edge of a village about a mile from Penzance.

Price temptation
Last night Mr Peter Richardson, 32, the builder, said: "In view of all this interest it is tempting to push up prices, but the prospective buyers are on the 90-95 per cent mortgage levels and another £500 a house could be outside their limits."

"This is the third stage of a development there. I could have sold this lot 18 months ago, but that would have meant rushing things and taking on more men."

"We are proud of the local workmanship that is going into these houses. Judging by the queue, the public obviously think the same."

First in the queue is Mrs Pat Kelly, 32, of Foxe's Way, Warwick. She and her husband, a moulder, arrived in Penzance for a Whitsun holiday and decided to buy a £4,650 bungalow.

Mr Kelly, who has been sharing her wait with her parents, Mr and Mrs Ronald Hiron, said last night: "I think the bungalows are very good value and well worth the long wait."

TALKS PLANNED IN PROBATION PAY DISPUTE

Talks to try to settle the probation officers pay dispute are planned for June 18. The national executive of the National Association of Probation Officers is to elect a new committee responsible for negotiating the previous offer of 8 per cent, was dismissed at the organisation's annual conference recently.

The new scales, with special long service bonuses, would have given probation officers a maximum salary after more than 20 years' service of £2,150. A trained probation officer would have a minimum starting salary of £1,500.

Although official action has not been urged by the association, individual groups of probation officers—particularly in Hertfordshire—have been organising boycotts of court work as token gestures of defiance.

Continuation of service
An official said: "We intend to continue the service."

Trans World Airlines also says it has no plans to charge for services in its Ambassador Club.

There is added identity for the Pan-American card holders, a metal strip runs through the card.

Several top people have found that it shows up on electronic anti-ski-jacking machines when they go through airport security controls.

Pan-Am ends era of free drinks for top travellers

DAILY TELEGRAPH REPORTER
THE era of free drinks in exclusive airport VIP clubs is over for thousands of top travellers who fly Pan-American. New membership cards, costing £12.50 a year, are being issued.

The airline is the first of the big three operators to America from London to charge for the privilege of being able to cut away from the herd.

The other two, BOAC and Trans World Airlines, have no plans to follow the lead.

Pan-American membership cards will enable the wives of top travellers to drink with them, and at the discretion of the airline, people who may be with them.

Apparently, to take some of the sting out of what seems to be an economic squeeze, the airline has arranged for its VIP passengers to belong to Six Continents Club run by an international hotel chain.

This extra privilege will mean special luggage labels and a red spot on suitcases which is supposed to make pageboys leap to give extra service.

Under pressure
Although Pan-American says it has been under pressure from civil aviation authorities to ask its regular passengers to pay for club membership, it seems clear that it is really being done because of economics.

At Heathrow, Pan-American's Clipper Club is the busiest of all the hospitality lounges. It deals with between 500 and 600 people a week.

BOAC says its Monarch Lounge looks after 300-400 "commercially important passengers" a week.

Continuation of service
An official said: "We intend to continue the service."

Trans World Airlines also says it has no plans to charge for services in its Ambassador Club.

There is added identity for the Pan-American card holders, a metal strip runs through the card.

Several top people have found that it shows up on electronic anti-ski-jacking machines when they go through airport security controls.

RAPID RISE IN ALL-BLACK CHURCHES

By Dr CECIL NORTHCOTT, Churches Correspondent
THE fastest-growing churches in Britain are the all-Black sects which are attracting increasing numbers of immigrants from Commonwealth countries.

These churches have achieved their high growth because of the hardening of race relations in Britain says Mr Clifford Hill in the journal of the Institute of Race Relations.

Help from America
He predicts that "so long as race relations in Britain continue to deteriorate, sect membership will continue to increase." This might not happen with the second generation of immigrants.

The all-Black sects are being expertly organised with practical help from the United States. Their teaching is based on a literal adherence to the printed word of the Bible and with strict taboos on tobacco, alcohol, obscene language and sex relations outside marriage.

Full-time ministers
The chief church of the New Testament Church of God in England with mainly West Indian members, has grown from 10,500 members in 1966 to 20,600 in 1970.

It has 74 congregations with 24 full-time ministers. Every member gives a tenth of his income to support the church.

The churches are "Pentecostal" in doctrine and practise "speaking with tongues" with ample participation by the congregation. Most sermons deal with the wickedness of the world, sufferings of the people and the coming of a great day.

ADVERTISEMENT
NO TO COMMON MARKET
1. Food prices up 50p per head per week.
2. Immigrants from the Continent admitted without restriction.
3. Laws made in Brussels—not at Westminster.
4. Common Market taxes imposed on Britain to subsidise Continental agriculture.
5. Commonwealth trade cut to favour Common Market.
6. Burden of £1,000 million each year on the balance of payments.
7. Britain no longer self-governing.
8. No appeal to British Courts from Common Market regulations.
9. Independent Britain reduced to a province of Europe.
10. The Common Market is for ever—no provision for withdrawal.
Demand that you be consulted by referendum
SIGN THE COMMON MARKET PETITION
Write to the Anti Common Market League, 79b Iverna Court, London, W8 6TU
or to the "Referendum before Common Market" Committee, East Knoyle, Salisbury, Wilts.

JORDANIAN ARMY MAKS DEAL WITH AL FATAH

CLARE HOLLINGWORTH in Amman
The Jordanian Government has no intention of using the Army to liquidate the Al Fatah guerrillas concentrated in the hills near Jericho, according to Mr Wasfi Tel the Prime Minister.

But the Army is covering the main access routes to the guerrilla bases and effectively preventing them from moving supplies or leaving the area for an operation.

EGYPT 'IS READY FOR 'BATTLE'

Our Cairo Correspondent
GENERAL MOHAMED SADEK, Egypt's Defence Minister, said yesterday that Egyptian armed forces had "completed build-up" and were ready for battle with Israel.

The armed forces are now in a position to deal with the situation according to the principle of "a tooth for a tooth" and a death for a death."

He was addressing the army on the fourth anniversary of the War, in 1967, which left forces positioned along the Suez Canal and in the Sinai Peninsula.

He added: "The armed forces are ready for the inevitable war, and we rely on the loyalty and faith in our struggle to regain our land, supported by the Arab nations of the whole world."

Claims denied
In an interview with a newspaper, Gen. Sadek claims that what happened in 1967 was not the result of errors committed by the Egyptian command.

When the confrontation takes the whole world will learn in Egyptian soldier is like that of the Israeli soldier is a year ago.

Stability of war with Israel is not at the same time as to be. Numeiry, the President of Sudan, in an interview with the Cairo newspaper Al-Nasr.

He believes that even if Israel withdraws from Sinai as a settlement, there is no comprehensive settlement and war will ultimately be resumed.

President Numeiry asserted Sudan's continuing support efforts for "the battle."

Rebels plan attack from Senegal

BRUCE LOUDON in Lisbon

Guerrillas attacking Portuguese Guinea are preparing a major assault from bases in Senegal, it was reported in Lisbon yesterday.

A strong armed concentration of guerrillas and military forces has been found between the towns of Ziguinchor and Bissau, in Senegal.

Military authorities in Bissau, capital of Portuguese Guinea, said they were concerned at the prospect of a big strike across the frontier.

Some of the concentration of guerrilla forces was contained in a despatch from Bissau by the Government-sponsored news agency.

Great movement
The despatch says that for the last few days "there has been great movement of military units around the two towns."

Quoted military sources in Lisbon report indicates the guerrillas may be moving towards Bissau from which they could launch an attack against Portuguese Guinea.

Military observers in Lisbon said the report confirms a possibility that the guerrillas may have the mobility that could seriously affect the campaign.

Armoured vehicles
The guerrillas may now have armoured vehicles supplied by Communists. One recent official statement said that a military vehicle belonging to the rebels was destroyed in Portuguese Guinea.

Until now the guerrillas have operated almost entirely on foot in the bases in Senegal and the republic of Guinea.

Guerrillas' claim
Portugal's urban guerrillas claimed responsibility yesterday for attacks on Nato installations during last week's Anti-racial Conference in Lisbon in a letter distributed to foreign correspondents in the city.

The letter did not mention the attack at the weekend on the Portuguese Consulate in Lisbon by armed men.

Portuguese border guards are on special alert in case guerrillas try to use the blank passports stolen from the Consulate to infiltrate into Portugal.

LINKS RENEWED
Tanzania and Nigeria announced yesterday resumption of diplomatic relations, broken off three years ago during the Nigerian civil war. They will exchange envoys as soon as possible.—Reuter.



Lee Kuan Yew, Singapore's Prime Minister, greeted by Mr Tikhonov, Soviet Deputy Prime Minister, on arrival in Moscow yesterday. Mr Lee was on his way to address the International Press Institute in Helsinki.

Bahamas face threat of secessions

By RICHARD BEESTON in Nassau

The threat of a series of new "Anzuillas" seceding from the Bahamas after it attains independence from Britain is being discussed in London this week in talks between Mr Lynden Pindling, the Bahamas Prime Minister, and Mr Heath.

Mr Pindling wants to find out what action Britain would take if some of the islands which are opposed to independence were to attempt a breakaway from the Bahamas commonwealth.

It is also understood that he is seeking financial assistance from Britain in its present critical economic period following a slump in the tourist industry. The country's revenues are well below expectations and the government has run seriously short of cash.

The situation is very different from that prevailing when Mr Pindling took over four years ago amid a flourishing economy. It has been badly hit, partly because of the political climate and the difficulties the Government is making over work permits for foreigners.

Mr Pindling, who recently suffered a serious split in his own party, badly needs a political victory. Leading his country into full independence has an obvious emotional appeal.

Britain has stated that the Bahamas, which at present has colonial status, can have independence whenever it wants it. What Mr Pindling in his talks in London now has to assess is whether he can afford such a victory and whether it makes his position even worse.

The Bahamas island of Abaco has already petitioned the Queen asking that its links with the Crown be maintained if the Bahamas becomes independent. Its few thousand inhabitants are mostly white, and many are descendants of loyalists who fled America at the time of the American War of Independence.

Two elections
The largely white population of Freeport, Grand Bahama, is talking of secession. Its members are disillusioned with the Pindling Government for abrogating the agreement on immigration which is causing a collapse of the once-flourishing Freeport economy.

Long Island, in the Bahamas, has also spoken of secession. The breakaway section of the Prime Minister's own Progressive Liberal party, which contains four of his former Ministers said in a statement that the Bahamas should not seek independence at any time before the next two elections.

The Prime Minister has recently shown signs of becoming increasingly autocratic and the opposition parties fear that independence might accelerate this.

Other factors that he will have to weigh during his London talks is the financial cost of independence at a time when the Bahamas is seriously short of cash.

These include establishment of diplomatic missions abroad and having to assume Britain's responsibility for the defence of the Bahamas.

The police are the only force in the Bahamas and it is doubtful whether they would be able to prevent secession of any island which calculated that it would be more profitable to go it alone.

The Bahamas do not qualify for British aid for underdeveloped countries. Until the tourist recession last year the islands were among the richest in the area and one of their main problems was over-employment.

Now, with no new development the construction industry is coming to a standstill.

It is understood that Mr Pindling will be told by the British Government that Britain is not prepared to become involved in another Caribbean Anguilla situation and that he will have to face the consequences himself of any decision he may take over independence.

Business circles here also express fears that independence for the Bahamas at this unsettled period would increase the apprehension of potential foreign investors.

Pentagon objections as Nixon chooses goods for China

By STEPHEN BARBER in Washington

PRESIDENT NIXON is to announce on Thursday details of American goods which may be exported to Communist China. This move comes as relations between Washington and the Nationalist Chinese in Formosa are deteriorating.

A State Department official confirmed yesterday that a review of suitable items for inclusion had been made by Commerce, Defence and Treasury Department officials with the co-operation of the Central Intelligence Agency.

Composition of the list has been keenly debated within the Government.

Some high Defence Department officials raised strong objections to permitting the sale of railway locomotives and earth-moving equipment. They contended that these could be used to increase the flow of war supplies to North Vietnam.

A controversy arose over aircraft exports. China is said to want Boeing 707s and 727s for international passenger routes and American brokers are keen to sell secondhand ones.

Textiles question
Although Peking seems to possess ample foreign exchange for its needs, it is expected that the Communist trade authorities will insist on a quid pro quo from America. This might easily take the form of textiles.

The United States is already fighting off a flood of low-cost textile imports from Japan and Hongkong to protect a relatively inefficient domestic industry.

Only last week America persuaded the Formosa régime to curb its textile exports to the United States. This makes the issue of Communist textile exports extremely sensitive.

Special article—P12

**2,000 SWIM TO
ESCAPE MAO**

By Our Staff Correspondent in Hongkong
More than 2,000 young Chinese refugees swam to Hongkong in May, the highest monthly total since 1968, at the height of the cultural revolution. The figure is based on 500 swimmers arrested, the Hongkong authorities estimating three people get through for every one arrested.

NATO LINK AS MALTA POLL ISSUE

By HAROLD SIEVE in Malta

MALTA is fully expected to apply for full Nato membership should Dr Borg Olivier, the nationalist Prime Minister, be returned to power in next weekend's General Election.

Mr Mintoff, the Labour party leader, his opponent, is campaigning on a foreign policy calculated to weaken, if not sever, Malta's existing Nato links. His chances of victory are not slender.

Dr Olivier and his National party candidates have come out openly for a continuation of the Western alignment. They have been telling electors they want to make Malta part of the Atlantic organisation.

Legalise headquarters
Nato sources in Malta consider the island's entry as 16th member a logical and necessary step. It would legalise the presence of the headquarters of Allied Naval Forces in Southern Europe. They have never been clearly defined.

The headquarters was set up in 1955, when Malta was still a British colony. Eleven years later, on independence, it had become a fixture invoking criticism that Britain had let in Nato "by the back door."

The 10-year defence treaty with Britain, which expires in 1974, also allowed the Nato issue to be swept under the carpet. If Malta joins, the need to renew the agreement with London would no longer exist.

When Malta's membership was raised in 1965 Denmark and Norway felt the island would drain Nato resources without making any reciprocal contributions. Today the northern countries recognise that the big Russian naval build-up in the Mediterranean represents the most serious threat to the alliance.

PETER STUYVESANT

Wherever you go... wherever the action is,
you'll find Peter Stuyvesant. King Size. International.
Rich, choice tobaccos. A touch milder than most
and decidedly smoother. Peter Stuyvesant...
so much more to enjoy.

INTERNATIONAL



The international passport to smoking pleasure.

29p TWENTY Recommended price

SITUATIONS VACANT

GENERAL
EXPERIENCED...
A NUMERATE MAN...
A CLIENT OF OURS...

ROYAL INSTITUTE OF...
PROFESSIONAL SERVICES...
ASSISTANT IN...
PHOTOGRAPHER

MEAT AND LIVESTOCK...
ASSISTANT IN...
PHOTOGRAPHER

ASSISTANT IN...
PHOTOGRAPHER

ASSISTANT IN...
PHOTOGRAPHER

ASSISTANT IN...
PHOTOGRAPHER

ASSISTANT IN...
PHOTOGRAPHER

ASSISTANT IN...
PHOTOGRAPHER

ASSISTANT IN...
PHOTOGRAPHER

ASSISTANT IN...
PHOTOGRAPHER

ASSISTANT IN...
PHOTOGRAPHER

ASSISTANT IN...
PHOTOGRAPHER

ASSISTANT IN...
PHOTOGRAPHER

ASSISTANT IN...
PHOTOGRAPHER

ASSISTANT IN...
PHOTOGRAPHER

ACCOUNTS ASSISTANT...
WEST END ADVERTISING...
COMPUTER STAFF...

COMPUTER STAFF...
ARGUS APPOINTMENTS LTD...
COMPUTER PERSONNEL...

COMPUTER PERSONNEL...
QUEEN ELIZABETH...
COLLEGE

QUEEN ELIZABETH...
COLLEGE
ACCOUNTS ASSISTANT...

ACCOUNTS ASSISTANT...
MANAGEMENT AND EXECUTIVE...
CAREER IN RECRUITMENT...

CAREER IN RECRUITMENT...
A CAPABLE YOUNG EXECUTIVE...
RETAIL CAR SALES MANAGER...

RETAIL CAR SALES MANAGER...
A MANAGING DIRECTOR...
CHIEF CASHIER

CHIEF CASHIER...
DIVISIONAL MGR. ACC...
BOUGHT LEASER CLERK...

BOUGHT LEASER CLERK...
THE BRITISH FILM...
ADMINISTRATOR

ADMINISTRATOR...
THE HOLYWOOD...
ACCOUNTANT

ACCOUNTANT...
A BARRISTER...
ASSISTANT

ASSISTANT...
ACCOUNTANT...
ACCOUNTS ASSISTANT...

ACCOUNTS ASSISTANT...
THE POLYTECHNIC OF...
LECTURER II IN ACCOUNTANCY...

LECTURER II IN ACCOUNTANCY...
ACCOUNTS ASSISTANT...
ACCOUNTS ASSISTANT...

ACCOUNTS ASSISTANT...
ACCOUNTS ASSISTANT...
ACCOUNTS ASSISTANT...

ACCOUNTS ASSISTANT...
ACCOUNTS ASSISTANT...
ACCOUNTS ASSISTANT...

ACCOUNTS ASSISTANT...
ACCOUNTS ASSISTANT...
ACCOUNTS ASSISTANT...

ACCOUNTS ASSISTANT...
ACCOUNTS ASSISTANT...
ACCOUNTS ASSISTANT...

MANAGEMENT TRAINERS...
SHOPS AND OFFICES...
KEITH CARDAL GROVES...
Factories, Offices

OFFICES TO LET...
CYRIL LEONARD & CO...
MOORGATE, E.C.3.

MOORGATE, E.C.3...
OFFICES WANTED...
FACTORIES & WAREHOUSES...

FACTORIES & WAREHOUSES...
FOR SALE...
CHATHAM, MODERN FAC...

CHATHAM, MODERN FAC...
NORWICH...
55,000 SQ. FT.

55,000 SQ. FT...
LIGHT INDUSTRIAL OR WAREHOUSING...
SUPERB BUILDING - FULLY EQUIPPED...

SUPERB BUILDING - FULLY EQUIPPED...
PROPERTY INVESTMENTS...
WANTED

WANTED...
PUBLIC NOTICES...
CITY OF LONDON...

CITY OF LONDON...
SALES MAN...
TRADE ASSOCIATION SECRETARY...

TRADE ASSOCIATION SECRETARY...
ACCOUNT EXECUTIVES...
MEET OUR REQUIREMENTS - WE'LL MEET YOURS...

MEET OUR REQUIREMENTS - WE'LL MEET YOURS...
TWO AMBITIOUS YOUNG MEN...
SALES CAREER

SALES CAREER...
AGE IMMATURE...
ENGINEERS AND DRAUGHTSMEN...
A BACKGROUND

A BACKGROUND...
A BACKLOG...
ENGINEERS AND DRAUGHTSMEN...
A BACKGROUND

ENGINEERS AND DRAUGHTSMEN...
A BACKGROUND...
ASSISTANT WORKS MANAGER...
CREDIT CONTROL

ASSISTANT WORKS MANAGER...
CREDIT CONTROL...
GREATER LONDON COUNCIL...
WOMEN

GREATER LONDON COUNCIL...
WOMEN...
ASSISTANT WORKS MANAGER...
CREDIT CONTROL

ASSISTANT WORKS MANAGER...
CREDIT CONTROL...
GREATER LONDON COUNCIL...
WOMEN

GREATER LONDON COUNCIL...
WOMEN...
ASSISTANT WORKS MANAGER...
CREDIT CONTROL

INDUSTRIAL & COMMERCIAL PROPERTY, A.C.

PRELIMINARY ANNOUNCEMENT BY DIRECTION OF THE FREEHOLDERS FOR SALE BY AUCTION AT A DATE TO BE ANNOUNCED (unless sold previously) Essex Road, Islington, N.1.

Extensive general industrial premises and distribution depot, with easy access and good loading facilities and frontage to 4 roads. Approx. 8,000 sq. ft. gross including 5,000 sq. ft. of Centrally Heated Offices Site Area Approx. 1.40 Acres VACANT POSSESSION SUMMER 1972

Apply Agents: Messrs Taylors 198 Upper Richmond Road, Putney, London, S.W.15. Telephone 01-788 0034.

At A.E.I. LIMITED Plastics Division Skipton Road, COLNE, Lancs. SALE OF COMPRESSION AND INJECTION Moulding Machinery

including Thirty one Bipel extra or semi-auto plus controlled or in line hydraulic compressor machines together with pelleting machines, pre-heaters, extruders, granulators, 5 fully automatic injection machines, 5 fully automatic extruders, 2 5.5 x 4 1/2 inch lathe, Ward 1 24 2DS and 7 casters, 3 B.S.A. No. 108 and 109 extruders, 2 auto cutters, 2 3/4 x 6 spindle drills, power presses, blast cleaners, blockwork, hardens, resters, Sherspa 1000 lb. electric lift truck. THURSDAY, 24th JUNE, 1971 at 11 p.m. On view daily from 10.30 a.m. to 4 p.m. (excluding week-end) and on morning of sale Catalogues from kenyon

Television House, Mount Street, Manchester M2 5WT. Telephone 061-832 3647. to let Prestige Factory/Office Complex 87,500 sq. ft. LONDON N.W.9 Near North Circular Road M1 & M4

FOR SALE BY AUCTION 15TH JULY 1971 (unless previously sold) RIPE FOR IMMEDIATE DEVELOPMENT, MAGNIFICENT SITE OVERLOOKING KEW GREEN Detailed Planning Permission for Ten of Five Town Houses with Garages Auctioneers: BLAKE & CO. 103, Mount Street, Grosvenor Square, London, W.1. Tel: 01-499 3761 (6 lines)

OFFICES TO LET IN LONDON AREA PRESTIGE SPACE, ONE FLOOR, KINGSWAY, W.C.2 - 5,050 SQ. FT. ENTIRE GEORGIAN BUILDING, ISLINGTON, N.1 - 3,050 SQ. FT. SMALL SUITE - DOUGHTY STREET, W.6 - 550 SQ. FT. SINGLE OFFICE PLUS RECEPTION, BUCKINGHAM GATE, S.W.1 - 260 SQ. FT. BROOMHALLS 6, PETTY FRANCE, S.W.1. 01-22 1324.

MIDDLESEX Sq 43,000 Ft. NEW OFFICE DEVELOPMENT To Let - Tenable to support an O.D.P. Detailed planning consent is already held by the developers Principals retainers: surveyors only apply M.S.12506, Daily Telegraph, E.C.4.

VICTORIA, S.W.1. Complete redecoration self-contained SHOWROOM/SHOP/OFFICE COMMERCIAL BUILDING To Let, Ready for immediate occupation. Floor area 1,200 sq. ft. premium. Sole agent: Brockle & Co., 63, Wigmore St., W.1H 0E1. Tel: 01-486 3531.

KENSINGTON, W.10 EDENHAM STREET REDEVELOPMENT Shops to Let Parade of 6 new lock-up shops, available on lease. End unit suitable for small supermarket. Basement storage with rear access and loading facilities. Offers of rent invited. Apply: Valuer and Estates Surveyor (V.A./M/Share/D.T.) Greater London Council, County Hall, 331 791. Telephone: 01-633 5000 (including contents). 01-930 0251.

LOSTOCK INDUSTRIAL ESTATE on the western outskirts of BOLTON * ON A61 MOTORWAY-LINK TO ALL MAJOR TRANSPORT ROUTES Details from: INDUSTRIAL DEVELOPMENT OFFICER TOWN HALL BOLTON. Tel: 22711.

M.L.5/M.51 TEWKESBURY, G. 10,370 Sq. Ft. on 100 Acres Modern Shop and Factory 1/00 FACTORY 7/00 FRESHLY TO LET Henry Butcher 352 St. Georges Way, Weybridge, Surrey. Tel: 01-848 4466

INVESTMENT OPPORTUNITY Irish Company developing a country club holiday complex invites some equity participation. Property has 3 miles sea front on a beautiful sheltered bay, well wooded. Existing hotel on property. Planning consent obtained. Replies to: Leaf Securities, 81 Amiens St., Dublin 2.

M.L.L.W. E.14. Modern etc. developing depot. 10,000 sq. ft. on 100 acres. 1/00 FACTORY 7/00 FRESHLY TO LET Henry Butcher 352 St. Georges Way, Weybridge, Surrey. Tel: 01-848 4466

INVESTMENT PROPERTY FOR SALE BATH STREET, GLASGOW Modern City Centre shop presently let on 21 year lease with 7-year reviews. Further particulars: HENRY J. CRONE & PARTNERS, 65 RENFELD STREET, GLASGOW, C.2. 041-332-7376.

UXBRIDGE Modern Offices To Let 37/0 sq. ft. (345m2) HERRING, DAW & MANNEYS, 28 St. James Square, SW1. 01-532 3466.

MINSTER ON SEA, SUFFOLK. 2 modern offices, 2,500 sq. ft. planning permission. 2/00 FACTORY 7/00 FRESHLY TO LET Henry Butcher 352 St. Georges Way, Weybridge, Surrey. Tel: 01-848 4466

SIT 1015 22 HANOVER, LONDON. 2 modern offices, 2,500 sq. ft. planning permission. 2/00 FACTORY 7/00 FRESHLY TO LET Henry Butcher 352 St. Georges Way, Weybridge, Surrey. Tel: 01-848 4466

22 St. James Square, SW1. 01-532 3466.

INDUSTRIAL & COMMERCIAL PROPERTY-SITES-INVESTMENTS

MODERN LUXURY OFFICES TO LET

Grosvenor Street Mayfair

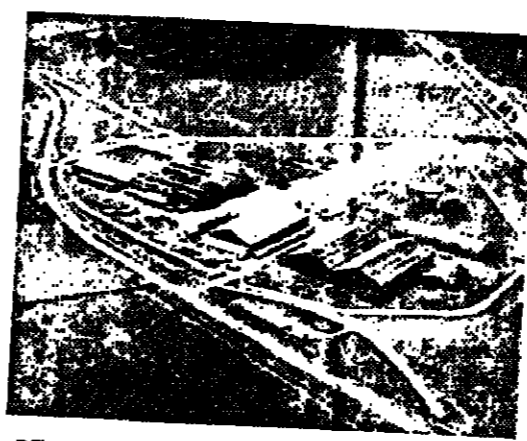
16,600 SQ. FT. Would Divide

Two floors available in this exclusive modern building situated in the centre of Mayfair a short distance from Bond Street. Air conditioned • Automatic fire • Excellent natural light • Basement Car Parking • Amplest of all floor reception for details apply.

EDWARD ERDMAN

6 Grosvenor Street, London W1X 0AD Tel: 01-629 8191

M.5 FREIGHT CENTRE, GLOUCESTER SUPERB EXISTING WAREHOUSES TO LET EXCELLENT LOADING FACILITIES WITH VAST YARDS



Units from 30,000 s.f. to 130,000 s.f. on 27 Acre Estate. Adjoining M.5 motorway now open with adjacent interchange. Oil fired heating. Clear floor space. 20-28ft. Headroom. Immediate possession is offered following complete modernisation. To let on long lease. Rents from 40p per s.f. per annum.

Percy Billon Ltd

RILTON HOUSE, LONDON, W.5. 01-567 7777.

BRUTON KNOWLES, 55, BARTON STREET, GLOUCESTER, GLO. 21267.

CHAMBERLAIN & WILLOWS, 23, MOORGATE, LONDON, E.C.2. 01-638 8001.

HOLLOWAY ROAD, N.7. 21,000 sq. ft. available for industrial premises to let.

DONALDSON CHARTERED SURVEYORS 17, DARTMOUTH LANE, E.C.4. 01-254 2281, Ref. E.J.B.

St. James's Buildings Oxford Street Manchester

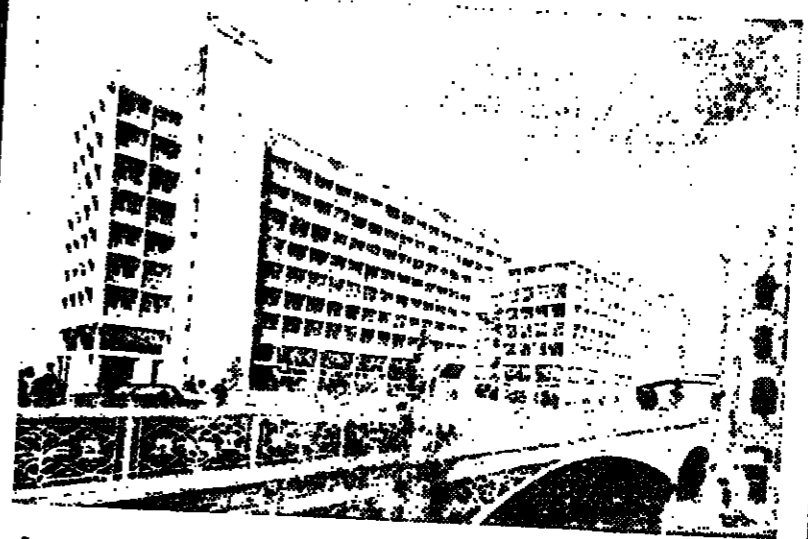
90,000 square feet of office accommodation still available. MODERNISATION BY CENTRAL & DISTRICT PROPERTIES LTD

LETTING AGENTS
ISAAC NEILD & CO. W.H. ROBINSON & CO.
Tel. 061-236 2344 Tel. 061-236 2281

EDWIN EVANS & SONS SALE BY AUCTION 24th June, 1971

London Victoria Mart, 155, Queen Victoria Street, E.C.4.
3 self-contained flats 65, FRANCISCAN ROAD, QUEEN VICTORIA STREET, E.C.4. WITH VACANT POSSESSION
Leasehold Commercial Property 22/23 MOSSBURY ROAD, E.C.4. WITH VACANT POSSESSION
Freehold & Leasehold Investments 72 & 74, QUEENSTOWN ROAD, S.W.11 59, MARNEY ROAD, S.W.11 78, KNOWLEY ROAD, S.W.11 3, THORNTON ROAD, S.W.11 8, HOSKINS STREET, S.E.10
Particulars from the Auctioneers' Office: 251, 252, Layer Road, Clapham, London, S.W.19. And at Morden, Surrey.

A development by Central and District Properties Limited
Bath House, Holborn Viaduct, London, E.C.1



An outstanding development including
Offices 37,522 sq. ft. (3486m²)
Commercial 60,250 sq. ft. (5597m²)
* Underground parking for 50 cars
Immediate Possession

Sole Letting Agents

Hillier Parker

May & Rowden

77 Grosvenor Street, London W1A 2BT
Telephone 01-629 7666
also at Edinburgh, Sydney & Melbourne

Knight Frank & Rutley

INDUSTRIAL PROPERTIES

BARKING	Oil Distribution Depot. 5.4 acre site. Tank Capacity 4,610 tons.	27,895 sq. ft.
KINGSTON-UPON-HULL	Freehold single storey factory on 9 acre site.	137,000 sq. ft.
MALVERN	Freehold modern single storey factory	28,800 sq. ft.
RYE	Freehold single storey warehouse.	15,210 sq. ft.
SOUTHAMPTON	Freehold single storey factory.	20,236 sq. ft.

30 Hanover Square London W1R 0AH Tel 01-629 8171 Telegram Knight Frank London W1R 0AH Telex 265584 and at Hereford

INVESTMENTS FOR SALE
IMPORTANT INVESTMENT
FREEHOLD SHOPPING PARADE (Industrial Area)
HIGH YIELD
MULTIPLE TENANTS
£165,000
Write: L.F. 12605, Daily Telegraph, E.C.4.

LEWIS ESHER 63577

COMMERCIAL MORTGAGES
1-25 year repayment term.
Capital and interest repayable by monthly or quarterly mortgage.
INTEREST 12% (one time) £70,000
INTEREST 12% (one time) £25,000
95, HIGH STREET, ESHER, SURREY.

Factories and Warehouses

COLINDALE, N.W.9 New single storey warehouse 44,760 sq. ft. To Let.	KEY New single storey warehouse 54,500 sq. ft. To Let.	NOTTINGHAM Modernised s/storey factory 75,400 sq. ft. To Let.	RODDOSDON Factory and w/house units 20,200,000 sq. ft. Rents from 55p p.a. excl.
HIGH WYCOMBE New single storey warehouse 30,000 sq. ft. To Let.	ROMSEY, HANTS New single storey warehouse 18,500 sq. ft. To Let.	WEDNESBURY Lofty s/s factory units 51,600/70,740 sq. ft. Rents 40p per sq. ft. p.a. excl.	ENFIELD New single storey factory 39,950 sq. ft. Rent: £21,700 p.a. excl.
LONDON AIRPORT (Close) Service depot/warehouse 30,000 sq. ft. on 2 acres To Let.	EARLSFIELD, S.W.18 Mainly ground fir w/house 13,500 sq. ft. Freehold £55,000.	BOLTON Single storey factory 45,000 sq. ft. Rent £10,000 p.a. excl.	NORTH LONDON Recently erected warehouse 13,150 sq. ft. Rent: £8,000 p.a. excl.
WILLESDEN, N.W.10 New single storey warehouse 17,640 sq. ft. To Let.	BRISTOL Modern s/storey w/house 6,300 sq. ft. Rent £2,750.	23 Moorgate, London, EC2R 6AX. Tel. 01-638 8001.	

Colchester Modern Single-Storey Factory

Approx 2 182m² (23,500 sq ft) on 1.3 ha (3 Acres)
Freehold For Sale
Apply

Hillier Parker May & Rowden
77 Grosvenor St. London W1A 2BT
Telephone 01-629 7666

TO LET
MODERN OFFICES AT FOLKESTONE KENT...
Gateway to Europe
MAJESTIC HOUSE
Available July 1971
Up to 34,000 sq. ft. net
Possible expansion to 80,000 sq. ft.

Smith-Woolley & Perry
Chartered Surveyors,
43, Castle Hill Avenue, Folkestone, Kent.
Tel. (STD 0303) 57191
AN EGDOR INVESTMENTS LIMITED DEVELOPMENT

ATTRACTIVE MODERN BUILDING-OFFICES
Adjacent Grosvenor Street, W.1.
TO LET
Apply
EDWARD ERDMAN
6 GROSVENOR STREET, LONDON W1X 0AD. 01-629 8191.

FOLKESTONE, KENT FACTORIES/WAREHOUSES
To be erected
From 3,000 to 36,000 sq. ft.
Smith-Woolley & Perry
Chartered Surveyors
43 Castle Hill Avenue, Folkestone, Kent.
Tel.: (STD 0303) 57191.

ALTRINCHAM Station House

MODERN OFFICE BLOCK
A FEW AREAS ONLY
REMAINING
Easy access to Manchester Airport and M6 Motorway
AMPLE CAR PARKING THREE LIFTS
Particulars from Joint Letting Agents:
MORLEY LONDON & PARTNERS, 19, Devonshire Street, London, W1N 1FS. 01-580 3397.
W. H. ROBINSON & CO., 79, Mosley Street, Manchester M2 3LP. 061-236 2281.
or Resident Caretaker.

ROMFORD & BUCKHURST HILL
FREEHOLD & LEASEHOLD SHOP INVESTMENTS
at
46 Queens Road, Buckhurst Hill
and
2/8 GREAT CULLINGS, RUSH GREEN, ROMFORD
as let and producing
per £2,113 annum
AUCTION 22nd JUNE, 1971.
Full details apply to:
Messrs. S. & Son, 148, High Road, Loughton, Essex. (Tel. 01-208 2121).

THAMESIDE INDUSTRIAL WAREHOUSE SITE, E.16
Approx. 3½ acres
For Sale Freehold
DONALDSON CHARTERED SURVEYORS 17 DARTMOUTH LANE, E.C.4. 01-254 2281. Ref. E.J.B.

Mortlake Sheen SW14

Redevelopment Site
0.42 of an acre
For Sale by Tender
1st July 1971
MARSH LEAVER & CO.
26 Bruton Street, London W1X 0AD 01-629 4261
also in Edinburgh and associated offices in Dublin and Malta.

SWINDON WILTS
Compact
SINGLE STOREY FACTORY OR WAREHOUSE/DEPOT
45,000 SQ. FT.
Ample Yardage. Main Services. Heating. Sprinklers.
TO BE LET
Additional storage 33,500 sq. ft. available if required
Henry Butcher & Co
59/62 High Holborn, London W.C1V 6EG
Tel: 01-405 8411

BOURNEMOUTH
Long established Educational Centre
Comprising Large House with Grounds
Ideal overseas students. Ripe for Redevelopment.
Auction at an early date
ROADSIDE HANDLING
82/83 St. Peters Road, Bournemouth. Tel: 25491 (12 lines).

GLOUCESTER Madleaze Industrial Estate

MODERN FACTORIES
To Let in Units
Totalling 130,000 sq. ft.
No. 1. D.C.s. required
WAREHOUSES
Totalling 74,000 sq. ft.
Built to tenants' requirements
Joint Letting Agents
RICHARD ELLIS 8-10 Bruton Street, London W1 Tel: 01-480 7151
BRUTON KNOWLES & CO. Albion Chambers, 50 Barton Street, Gloucester Tel: 21297

For the Joint Liquidators of H. Dabington & Sons Ltd.
GAINSBOROUGH - LINGS.
At Very Low Reserve - to Ensure Sale
Excellent Modern Industrial Premises at
CORRINGHAM ROAD
Long Trunk road frontage.
Site Area - 1.278 acres.
FLOOR AREA - 12,200 sq. feet.
Level concrete site
Substantial, recently constructed single-storey buildings - suitable for a wide variety of uses and capable of further development or sub-division.
AUCTION - 5th July, 1971
Full details from the Auctioneers:
T. SAXTON & COMPANY, Chartered Surveyors
6/8 Paradise Street, Sheffield, 1.
Tel.: 0742-77685 (5 lines).

Knight Frank & Rutley
CENTRAL LONDON OFFICE BUILDING
FREEHOLD FOR SALE
14,000 Sq. Ft. Approx.
Possession Summer 1972.
30 Hanover Square London W1R 0AH Telephone 01-629 8171
Telegrams Knight Frank London W1R 0AH Telex 263584 and at Hereford

By Order of the Trustees of William Whitmore (deceased)
FREEHOLD BUILDING SITE
NO. 111 VICTORIA ROAD, HORLEY, SURREY
with
OUTLINE PLANNING PERMISSION FOR SHOP AND OFFICE DEVELOPMENT
To be offered for Sale by AUCTION (unless previously sold by Private Treaty) on TUESDAY, 22ND JUNE, 1971
Joint Auctioneers
Messrs. Clifton, 81, Abchurch Lane, London E.C.4. Tel: 01-859 7800. Ext. 203
Messrs. Skinner & Ross, 15, Old Georgian House, 37, Ball Street, Surrey Rowley, Surrey. Tel: 01-859 47575.

On instructions from the Andover Borough Council
ANDOVER, HAMPSHIRE
Valuable Freehold Residential BUILDING LAND (in two lots) about 10 ACRES with Outline Planning Consent for a maximum of 100 DWELLINGS
Main Services Available. Vacant Possession
AUCTION 30th JUNE, 1971
PEARSONS Established 1909
17/21 London Street, Andover, Hampshire (Tel. 2297)
Further offices in Haas, Wilts, Surrey & Somerset.

THE GUARDIAN ESTATE
MODERNISED INDUSTRIAL UNITS
FROM 5,000 TO 150,000 SQ. FT.
GREENOCK
THE ESTATE IS ONLY HALF A MILE FROM THE TYPE FOUR TERMINAL
GREENOCK LIES 23 MILES WEST OF GLASGOW AND HAS MAIN ACCESS TO THE CITY CENTRE AND THE AIRPORT VIA THE A1 AND M8.
FULL PARTICULARS AND RENTAL DETAILS ARE AVAILABLE
Application to the Sole Agents -
JAMES BARR & SON CHARTERED SURVEYORS
12 ST VINCENT STREET, GLASGOW

HÈMEL HEMPSTEAD, HERTS
Detached Ground Floor Factories to Let
With room for expansion
Adjoining M1, 25 Miles from London
8,000 sq. ft. and 3,400 sq. ft. well lit - production area with two heavy offices of 2,100 sq. ft.
All services. On site car parking.
For full details apply to:
Sole Estates Office, Commission for the New Towns,
New Court, Watlington Street, Hemel Hempstead.
Telephone: Hemel Hempstead 2275.

Where the anguished cry goes out for help...

FACES of despair in the nightmare of West Bengal in which millions are playing a waiting game—hoping that help will fly in from the rest of the world in time.

Thousands have died from hunger and disease. These refugees are among the more fortunate ones to have reached the safety of an Indian camp, but there is nowhere else for them to go. Nothing to do but wait and pray.



For the physically or mentally disabled needing day and night attention:

an Attendance Allowance of £4.80 a week.

The Attendance Allowance is a completely new benefit for the extremely severely disabled. It can be paid for any adult or child aged 2 or more whose disability, whether physical or mental, is so severe that one of the following conditions exists, and has existed for at least six months:

- a) he requires frequent attention from another person in connection with his bodily functions throughout the day and prolonged or repeated attention during the night; or
- b) he requires continual supervision from another person in order to avoid substantial danger to himself or others.

In the case of a child, he must also require attention and supervision substantially in excess of that normally required by a child of the same age and sex.

If you, or your child, or the person you look after might be entitled to an Attendance Allowance...

I think the person below may qualify for an Attendance Allowance. Please send them the leaflet and claim form without delay. Although this tax-free allowance is not payable until 6th December 1971 it will cut down the risk of delay if you act quickly. It will take time to deal with the many claims we shall receive. So the sooner you apply the sooner we shall be able to say whether the allowance will be payable.

The allowance is not payable for people receiving free treatment under the National Health Service as hospital in-patients or for people in certain residential accommodation such as local authority "homes".

There are various conditions about residence in the United Kingdom.

These and other relevant details are clearly explained in the leaflet. Fill in the coupon now, or call at your local Social Security Office.

Mr/Mrs/Miss (Block capitals please)
Address
Post Code

(tick if under 16)

Please send this coupon to your local Social Security Office. Your local Post Office will give you a stamped-addressed envelope.

Issued by the Department of Health and Social Security.

DEATHS, IN MEMORIAM

Continued from Back Page

MACDONALD—On June 5, 1971, at 144, Old Road, Harpenden, ALSTAIR F. C. M., son of the late Mr. and Mrs. J. M. Macdonald.

MASTERS—On June 5, 1971, at 10, Mansfield Road, Cambridge, EDWARD J. MASTERS, aged 78, died on June 4, 1971, after a long illness.

MEYER—On June 6, 1971, at her home, 10, Mansfield Road, Cambridge, EDITH MEYER, aged 82, died on June 5, 1971, after a long illness.

MURPHY—On June 6, 1971, at 10, Mansfield Road, Cambridge, JOHN MURPHY, aged 78, died on June 5, 1971, after a long illness.

NICHOLS—On June 6, 1971, at 10, Mansfield Road, Cambridge, ROBERT NICHOLS, aged 78, died on June 5, 1971, after a long illness.

PEARCE—On June 5, 1971, at his home, 10, Mansfield Road, Cambridge, ROBERT PEARCE, aged 78, died on June 4, 1971, after a long illness.

SMITH—On June 5, 1971, at 10, Mansfield Road, Cambridge, JOHN SMITH, aged 78, died on June 4, 1971, after a long illness.

WRIGHT—On June 5, 1971, at 10, Mansfield Road, Cambridge, JOHN WRIGHT, aged 78, died on June 4, 1971, after a long illness.

ACKNOWLEDGMENTS
LINDA—KIMMEL, NORTON and PAULINE and JOHN WALTON and family of the late Mrs. M. G. LINDA wish to express their sincere thanks for the loving care and attention given to their mother during her recent illness. Special thanks to the staff of the hospital and to the friends who visited her during her illness. The family of the late Mrs. M. G. LINDA.

MEMORIAL SERVICES
FARMER—A Memorial Service will be held for VOLLEY FARMER in the Parish Church of Harpenden at 11.30 a.m. on Saturday, June 12.

CONSECRATION
REMAN—The consecration of the Mural Shrine of MARGARET RECOVERY in the Parish Church of Harpenden will take place at 11.30 a.m. on Saturday, June 12.

IN MEMORIAM
ANNIE—On June 8, 1971, at 10, Mansfield Road, Cambridge, ANNIE, aged 78, died on June 7, 1971, after a long illness.

FLOWERS
FLOWERS FOR THE SOULS OF THE DEPARTED. Flowers for the souls of the departed. Flowers for the souls of the departed.

The Observer Magazine
— 77,000 readers who went skiing last year.

The Sunday Times Magazine
— 87,000 readers who went skiing last year.

The Daily Telegraph Magazine
— 95,000 readers who went skiing last year.

When it comes to winter holidays The Daily Telegraph Magazine leaves the others trailing.

The Daily Telegraph Magazine is regular reading with 95,000 of Britain's skiers. They're the people who are active by temperament and big spending by choice. This sport means travel. And that means money. Switzerland, Austria and Italy are three countries really rated by those who ski. Snowed under with the right conditions, they offer ideal facilities for the winter sports enthusiast.

Similarly, The Daily Telegraph Magazine offers ideal facilities for advertisers in search of holiday travellers for these particular countries. It reaches more of them than either of its competitors. And it also has the cheapest rates in terms of cost per thousand readers.

Just as skiers are in no doubt as to where they want to go, there's really no doubt about where it's most advantageous to reach them. So next time you're scheduling winter holiday advertising, why not bring your campaign in from the cold and—try The Daily Telegraph Magazine for size?

THE DAILY TELEGRAPH MAGAZINE
*Target Group Index B.M.B.R. July 1970.

HOME PAGE



One of the larger bedsitters with the resident's own furniture. The kitchen unit, with baby-cooker, fridge, sink and larder can be curtained off.

Picture by ROBERT HOPE

Bedsitters end loneliness for the over-sixties...

By Violet Johnstone

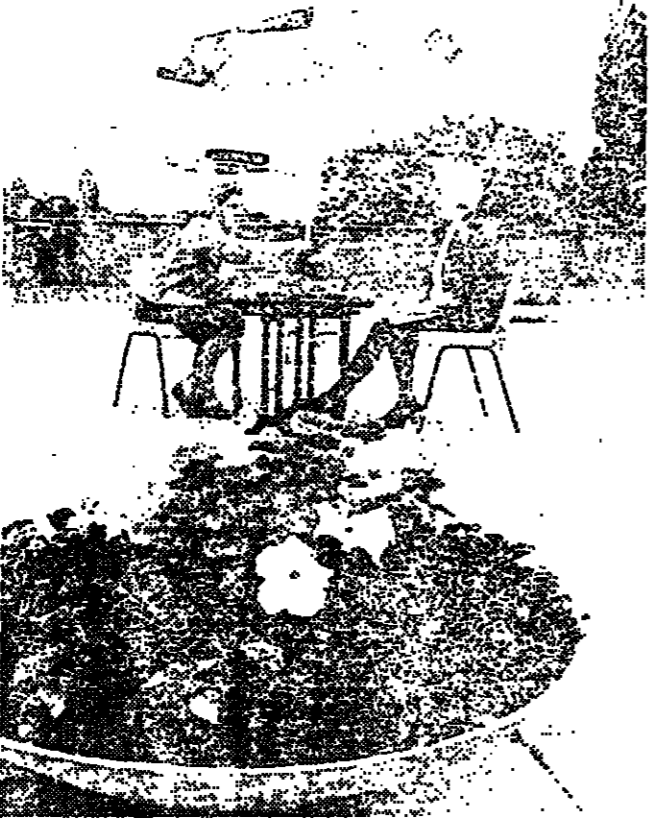
THE flowers and umbrellas were put on the roof garden last month—the finishing touches to Cecil Court, a scheme to provide a new home for the over-sixties. Passing it you'd think it was an ordinary small block of flats, and as you step inside the front hall the atmosphere is that of a pleasant hotel: a notice-board tells you who is in or out and what are the week's various activities.

Cecil Court is in fact a new project for women over 60: 41 individual bedsitters on four floors with a large communal dining-room and lounge with television and piano downstairs. Talking to the residents as I looked around the building, it struck me as an ideal solution to a very real problem of our age: older people's loneliness.

The formula is simple. Any woman over 60 and not fully employed—there are a few part-time workers here—is eligible. For £9.50 (a few larger rooms are £2.50 more) a week she has a bedsitting room, a three-course lunch downstairs, central heating, use of bathrooms (two with Medicabaths) and laundry rooms. Also included are £1.50 worth of units to be spent at the shop on the premises for groceries, milk, eggs, bread, etc., which the residents find more than enough for their breakfast and evening meals.

For those who can't afford it, supplementary benefit can be obtained. "It's the freedom I like," one resident told me. "You get up when you want to, entertain as you wish."

"I have my own television as I don't want to be with the Mob every night," said another resident with good humour. "The Mob," as well as watching television, chat, road, play cards (there's a whist drive once a week), or perhaps have a film show and



In the heart of Ealing, but surrounded by greenery: two residents take tea on the roof garden of Cecil Court.

HERE, THEY HAVE ALL THE BUILDING ANSWERS

BY ALICE HOPE

THE more we become a nation of owner-occupiers, the more interested do we get in our own homes and in maintaining and improving them.

Extensions and sun-rooms, better kitchens and bathrooms, new playrooms and car ports—all these are being added on now by enthusiastic home-improvers, who either do the job themselves or call in the local builder.

Well over 5,000 people called during the last month at the Building Centre in London's Store Street to see a display of kitchen units. It was probably the most successful exhibition ever held there and many of the visitors, drawn by the kitchen theme, spent an enthralling hour or so in the Centre looking round.

This year the Building Centre is celebrating its fortieth anniversary; and every year its value to architects and to the general public increases.

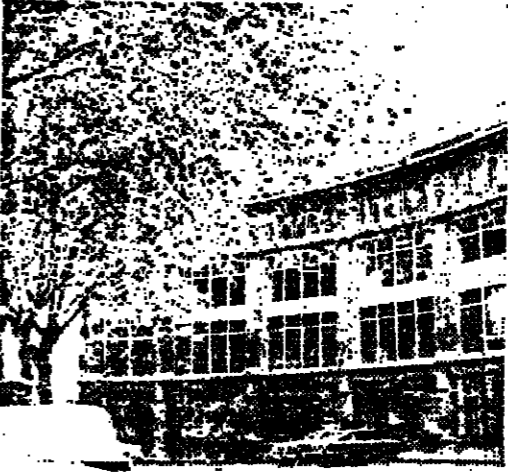
As its President, the distinguished architect Sir Frederick Gibberd says, it represents "one of those marvellous aspects of the English genius, entirely for free."

Sir Frederick believes passionately in the Centre, which he describes as a temple to the Design Centre (in Haymarket). Unlike the Design Centre, however, the Building Centre does not seek to exhibit for specialised tastes. It is maintained solely by the building industry and is concerned solely with this aspect.

If you want to know anything about building, about walls and floors and constructional materials, about sanitary fittings and basic kitchen equipment (other than pots and pans and casseroles), about heating and fuel, about tiles and furniture, then the Building Centre has the answer.

The project originally began on three floors of a building in Bond Street in 1932, when a hundred or so manufacturers sponsored the opening of the Centre. In 1941 the premises were wrecked by a Nazi bomb,

The Building Centre, right, in Store Street, just off the busy Tottenham Court Road, is a leader among the world's Building Centres. Inside there's something for everybody, from the architect in charge of a major project to the newly-married girl who wants a new latch for her front door. Pictures by AUGUSTUS RHODES.



and when temporary accommodation was found, the financial situation was so tight that Mr. Goulder, first director and secretary of the Centre, found money from his own resources to pay the wages of the junior staff.

When the present director, Mr. Gontran Goulden, joined the staff in 1948 there were 378 exhibits from various firms on view at premises in Conduit Street. Today, in Store Street, there are thousands of exhibits, and many thousands of visitors who

range from architects seeking technical help to housewives looking for a new sink.

As well as the practical exhibits, which range from floor coverings to door-knobs, the Building Centre holds information, catalogues and trade literature in a range covering 6,000 manufacturers, and they will provide extra information for you on any subject on which you need guidance.

Through the use of facsimile machines the Building Centres throughout the

Houses, like people, need a little love

SO you've obtained a mortgage and you've become a proud house-owner. What now? It's no use thinking you can sit back and enjoy doing nothing. Homes, like people, have to be maintained with care and love.

Some builders help their customers by giving suggestions and ideas for the upkeep of their houses. But the best manual of this kind I've seen is supplied to owners of their houses by Guildway, builders of those timber-framed houses which have been such a success in this country and on the Continent.

The chairman of Guildway, Major More-Molyneux, is the owner of one of the oldest stately homes in England, Losley House, near Guildford. It is an Elizabethan mansion which has been lovingly preserved and cherished since Tudor days, so it anybody knows anything about house maintenance it should be the Major.

It is said that Queen Elizabeth I suggested to her friend and trusted adviser, William More: "Build me a house fit for a queen and I will come and visit you." Whereupon the Sheriff of Surrey, the present owner's ancestor, went away and built Losley Hall. The Queen kept her word and stayed there three times.

Guildway makes "packaged" timber-framed houses. All the parts are pre-constructed in a modern factory, sent in vans to the building site and erected quickly without the problems of brick-built traditional houses.

CONDENSATION Stop condensation by keeping the rooms warm and ventilated. Stop the discharge of water vapour at source by ventilating the bathroom to the open air; do not let a bathroom door open to discharge water vapour to other parts of the house. This also applies to the kitchen

and utility room where clothes are dried or aired.

DRAINAGE Find out from your builder the exact layout of your drains and do not reduce the soil cover to the drains or raise over them extensions to the house, such as greenhouses or sheds.

Clean all gullies at appropriate times of the year and to avoid stoppages in the ventilation of the drains, the soil vent pipe should have a wire balloon to its head which will require replacement about every five to 10 years.

PAINTING and DECORATING There are many materials on the market but soap and water are the best to use to clean paintwork. When re-painting internally, and a room such as a kitchen has suffered from condensation, use a paint of an anti-condensation type.

FITTINGS Plastic laminate tops in kitchens should be treated with care to avoid chipping and scoring the surface and never use abrasive cleaners or steel wool. Polishing with a flannel will help to maintain the lustre.

Rubber draining boards or pads should not be left permanently on the plastic laminate surface, and use a protective pad for hot pans and active electrical appliances. Never use abrasive cleaners on enamel, vitreous china or high impact polystyrene.

FLOORS Do not use too much water when washing vinyl-tiled floors or the fixing adhesive could lose its bond with the base. Care should be taken to avoid the spillage of oils or vinegar, which could affect the adhesive.

The Guildway booklet also has space left for information on the heating system and general information on the location of meters, water taps and tanks, and the number of the certificate issued by the National House Builders Registration Council when the house was built.

It's not so much the policy, more the reassurance

ONE of the top men in British life insurance, Mr Kenneth Aslet, has recently been quoted as agreeing in effect that British women are not life insurance minded. My own feeling is that it may be more a case of life insurance not being woman-minded, for there seems to be a considerable lack of psychology behind the efforts to persuade us to insure ourselves.

Mr Aslet is surprised that a policy giving a single woman, on marriage, the option of changing it into an assurance on the life of her husband "lacks appeal." I should hope so.

But this is not my main complaint about the insurance industry's attitude to women. Its executives would do well to ponder that, without us, the number of life policies taken out by men would doubtless shrink to less than half.

First priority, as I see it, is surely to protect wives against the sudden disaster of a breadwinner's death. So we have a vital interest in life assurance, yet it is still regarded as a man's special domain and few women have any say in it.

Partly, of course, this is our own fault. I asked my insurance broker—a man with long practical experience—whether he preferred wives to be present at an interview or not. "On balance, no," was the reply.

He said that in many cases women will actually stop their husbands from insuring for as much as they had originally in mind. The most frequent thing a woman says is, "Darling, I don't really care what happens to me when you're gone; the

What actually happens is that the broker just walks in and effects a sale (it is called, rather nicely, "consultation") at the first or second interview. Yet men accuse US of "impulse buying."

Again I can't help feeling that it is our fault. Surely it need not upset the finely-balanced, delicate emotional basis of a husband-wife relationship, simply to ask him about it. Is he insured for enough? Shall we be able to dispose of at least some cash immediately or shall we be exposed to long waits and financial worries on top of the shock and agony of bereavement? Will what we receive be free of estate duty? Even... what will happen to the policy if he goes off with his secretary one day?

So surely, Mr Aslet, if you want women to become insurance-minded, direct your attention in future towards us. Educate us, but make it plain and straightforward and down-to-earth so we can understand it. For example, add to each policy a slip of paper telling us exactly how much it will be worth, and what we have to do to claim it.

That should result in our becoming more insurance-minded, as you call it Mr Aslet. We might even become intelligent enough to start insuring ourselves as well.

By Olga Franklin

very idea of profiting from your death... no, no, it makes me shudder." The broker added: "By the same token, I cannot think of more than one woman in a hundred who would honestly tell her husband that she feels he is under-insured."

The trouble often is, it seems to me, that the husband himself is a bit vague about it. Ask any man how much life insurance he carries, and perhaps one in three will know the answer—very roughly! Ask an employed man about the death benefit in his pension scheme, and you can double or even treble the odds.

Nowadays when an increasing amount of life insurance is usually linked with investment, it seems unfair that a husband is often not prepared to "shop around" in the way he expects his wife to do, when she goes to the market to choose "sp off."

Advertisement for Faded Look by Fenwick. It features a photograph of a woman in a blue and white outfit. The text describes the outfit as a Safari Suit in soft edgy blue Vince/wool, with silver stud buttons and belt. It also mentions a matching skirt and shorts, sizes 14-18. The price is £8.50 for the jacket and £4.75 for the skirt and shorts. Fenwick Ltd, New Bond Street, London, W.1. Tel: 01-629 9161.

Advertisement for Traveller's checks. It features a photograph of a woman in a long coat. The text describes the checks as light-as-air housecoat in check nylon seersucker, perfect for travelling—uncrushable, non-iron, and weighs next to nothing. It also mentions that the checks are available in blue, pink or turquoise colors on white. Sizes W, WX, OS, £7-75 P&P 25p. Lingerie Department, second floor, please use this coupon for post orders. The coupon includes fields for Name, Address, and a section for payment (P.O./cheque enclosed or Cash enclosed). It also provides the mail order department address: Harvey Nichols, Knightsbridge SW1, Phone 01-235 5000.

Advertisement for Entertaining...? featuring a book titled 'SOCIAL COOK'S BOOK will help you'. Published by Collins at £1.00 from booksellers and stationers or £1.14 including parking and postage, direct from The Daily Telegraph (Dept. S.C.), 135, Fleet Street, E.C.4, or Wicky Grove, Manchester.

Large advertisement for Cotton Something fresh...for the Home. It features a photograph of a stack of cotton sheets. The text describes the sheets as new easy-care cotton sheets by OSMAN, available in pink/blue or lemon. It lists features like non-iron, stay fresh & crease free, and crisp & cool. Prices are listed for 70"x104" (£2.45 each), 90"x104" (£2.95 each), and Pillow Cases (£1.15 pair). It also includes information about fittings, floors, and condensation. The advertisement is for Marshall & Snelgrove, Oxford Street London W1A 1EF, Tel: 01-580 3000.

DISMISSAL OF STAKE TEACHER TO STAND

OUR EDUCATION CORRESPONDENT
The dismissal of Mr Christopher Searle, 24, the teacher who published his pupils' poems without the permission of his school governors, still stands.
It took the entire board of governors of the school, St John Cass Foundation and Redcoat School, in Stepney, London, 5½ hours to come to this decision last night.

JUMBO JET CHARTERS RESTRICTED

By A. J. TRAVERS
CERTAIN foreign airlines operating charter flights to and from Britain for affinity groups have been forbidden by the Trade and Industry Department to use Boeing 747 Jumbo jets, which can carry a maximum of 420 passengers.
They will be restricted for the time being to planes carrying not more than 252 passengers. The Department said the decision was intended to prevent foreign airlines taking traffic belonging to British airlines or to the airlines of countries to which Britons were being flown.

The restriction will not apply to British airlines or to those foreign airlines operating charter flights between Britain and their own countries.

An American airline, for instance, could continue to use Boeing 747s for flights carrying affinity groups between Britain and America. Affinity groups are clubs or societies whose primary role is not to arrange cheap charter flights for their members.

Airlines worried
Charter flights across the Atlantic now cost less than half the scheduled air fare. It is expected that Jumbo jets, with their large passenger capacity, would, if used for charter work, lower the cost of cheap flights even more.

This is worrying the regular carriers, who believe the charter carriers are taking away their business. The introduction of the Jumbo has led the Department to start a review of its charter flight policy.

The ban will have little effect on charter flights arranged for this year between Britain and America, but American airlines flying Britons to Canada are subject to the restriction.

Woman quits first sex supermarket

Daily Telegraph Reporter
ANN SUMMERS, 29, founder of Britain's first sex supermarket in Edgware Road, London, is to leave the business. She recently called in a firm of business-management experts.

In a statement yesterday she said she had resigned "with regret" from the boards of Ann Summers, Ltd. and its associated companies.
She gave as the reason "the rapid acceleration of certain circumstances within the company, with which I have become increasingly unhappy and which have always been beyond my personal control."

"I realise my resignation will give an immediate platform to the small but vigorous band of detractors that have seen my company as an opportunity to express their anachronistic views."

Public support
"For that reason I would like to emphasise that since the company started trading in September last year, thousands of the public have supported my own strong personal belief in the real need for a service of this kind in Britain."

Miss Summers opened the Edgware Road "sex-and-hair" shop on Sept. 8. By January she had another shop in Bristol and was introducing a chain of 100 throughout Britain.

In May, after the appointment of Miller Marketing Associates as consultants, Mr Tom Miller, director, said: "There was a lack of management ability in the early stages of the company's life. One of my men has moved in here, with complete control."

10,000 SEEK SEX ADVICE FROM BROOK CENTRES

By Our Health Correspondent
More than 10,000 young people sought advice on contraception and sexual problems from the Brook Advisory Centres last year, Mrs Helen Brook, founder, said in the annual report published yesterday.

She said the centres, which give advice to unmarried youngsters, made an important contribution in helping young girls who had had one pregnancy to avoid another.

In Birmingham, 15 per cent of new patients had previously been pregnant. In the King's College Hospital Centre, London, the proportion was 25 per cent.



A chance meeting at Heathrow yesterday between Princess Anne, who had flown in from Oslo after a five-day visit, and her aunt, Princess Margaret, who arrived, minutes earlier, from an engagement in Devon. Princess Anne quipped: "I was meant to be here first."

Woman complains to dead MP's hospital

By A. J. McILROY
AN INQUIRY has been ordered into the death of Mr Malcolm MacPherson, 66, Labour MP for Stirling and Falkirk Burghs, at Manor House Hospital, Golders Green, on May 24.

The hospital said last night it had ordered the investigation after receiving a complaint from Mrs Mowenna Thistlethwaite, 58, a friend of Mr MacPherson, about his treatment during the three days he was in hospital.

A spokesman said: "Until we have completed that investigation we can make no further statement."

Mrs Thistlethwaite, a widow, of Gordon Place, Kensington, said last night she had sent a written complaint to the hospital saying she had expressed

Family satisfied

Mr MacPherson, who was MP for Stirling and Falkirk Burghs since 1948, was married in 1929 to Miss Janet McKay, who died in 1961. He had two sons and two daughters. In June, 1965 he reduced the Labour Government's majority to one when he went to hospital for a thrombosis.
His daughter Miss Evelyn MacPherson said at his home at Alyth, Perth, last night: "Mrs Thistlethwaite spoke to my brothers Donald and Alan about her complaint over our father's treatment. My brothers spoke to the hospital authorities and we are satisfied to let the matter rest."

CAR IN £40,000 COINS THEFT FOUND

By Our Crime Correspondent
A car stolen from Bedford Square, Bloomsbury, on Sunday night which contained a briefcase holding old American gold coins valued at £40,000 was found abandoned yesterday in Westcott Road, Watlington. It was locked.
The case was missing. In it were 2,430 \$5 dollar and 895 \$20-dollar Indian head pieces, all dated between 1909 and 1915.
Police declined to name the owner, who is believed to be abroad, or the broker who had been acting for him. It was the broker's Mercedes car from which the coins were stolen. The restriction on possessing more than four gold coins was abolished on April 1.

EDITOR CHARGED OVER HEADLINE

Melan Abdullah, 51, editor in chief of the Malay newspaper Utusan Melayu, and Samad bin Ahmad, a sub-editor, pleaded not guilty in Kuala Lumpur, yesterday to charges of sedition by publishing a headline tending to create racial hostility.
The heading said "Abolish Tamil and Chinese medium schools," and appeared in the April 6 issue. If found guilty, the two face a maximum of two years jail and a £681 fine. The hearing was adjourned. — Reuter.

Thailand arrests

Our BANGKOK CORRESPONDENT cabled: Two editors of Thai daily newspapers and a columnist were arrested yesterday in Bangkok on charges of defamatory libel against them by Thailand's foreign minister, Mr Thanat Khoman. They were released on bail.

DE VALERA ILL

President de Valera of Eire, who is 87, is in bed recovering from a severe attack of sciatica. He has been suffering from the complaint for several days.

GENDARME RIOT CHIEF DISMISSED

By ANTHONY MANN
In Paris

RESIDENTS of the Latin Quarter in Paris are arming themselves with shotguns, a chief superintendent of police has been removed from his post and the city council called yesterday for tighter security following the city's latest "reign of terror."

The "terror" came when gangs of vandals rampaged through the Latin Quarter looting and burning buildings until early on Sunday morning.
Sixteen clothing and shoe stores were looted in the Boulevard Saint-Michel neighbourhood alone. Several other stores were attacked in the First, Second and Third Districts.

Shop-owners and residents complained that police took nearly two hours to answer calls for help. They said they knew smashed doors of shop windows had nearly all escaped with their loot before police arrived.
Police spokesmen said the delay had been exaggerated. But it was admitted that several policemen on the beat had telephoned urgent calls for help.

M. Jacques Lenoir, Prefect of Police, said that the chief superintendent on duty had "not attached sufficient weight to the calls made by shopkeepers and patrolling policemen." Mr Lenoir had informed his superiors sufficiently quickly. The name of the chief superintendent was not made public.

Traffic lights smashed

Shopkeepers in the Latin Quarter gave lurid descriptions of the actions of the "Lefists, anarchists and just simple thugs."

A leader whose face was covered with a handkerchief had directed the building of barricades. Traffic lights had been systematically smashed, to create traffic blocks.

In contrast to the police, the fire brigade answered calls immediately and extinguished small fires. But they were not in a position to tackle the thugs "whose girl friends were trying on looted dresses on the pavements."

M. Pierre Bas, president of the Gaullist Party in Paris, tabled a question yesterday to the Ministry of the Interior asking what measures would be taken to prevent a repetition of "the scenes of destruction and

The Gaullist-dominated Paris council issued a statement about the "acts of vandalism and looting of several neighbourhoods."

Four detained

Later, two detectives keeping watch at Panshanger airfield saw the plane circle and fly off again. It returned shortly after, then left a second time.

Later, a farm worker saw an aircraft take off from Wallington airfield, near Baldock, 15 miles away. Police detained four coloured men nearby.

Later Osborne's aircraft landed at Panshanger and detectives who went to the plane noticed a strong smell of perspiration.

It was later established that he had made the four Indians take off their socks and put them over their heads to prevent any smell of perspiration.

Det. Insp. ROBERT ASHMAN said Osborne had three previous convictions—two of them involving the Biafran war. He had been fined £650 for unlawfully exporting Meteor aircraft and a cannon.

Migrant smuggler pilot jailed for three years

DAILY TELEGRAPH REPORTER
THE pilot of a light aircraft which landed four illegal Indian immigrants at a village airstrip in Hertfordshire was jailed for three years yesterday.

He is ANTHONY JOHN OSBORNE, 34, of Cambridge Park, Wanstead, Essex.

He admitted at Hertfordshire Quarter Sessions, St Albans, conspiring to enable the immigrants to land in the United Kingdom and of commanding the aircraft that carried them.

PETER LEWINGTON, 55, of Forest Drive East, Leytonstone, was given an 18-month jail sentence suspended for three years after admitting being Osborne's lookout man. He pleaded guilty to conspiracy.

ROBBED MAN CHASES RAIDERS AND RAMS CAR

By Our Crime Staff
A café owner, Mr Joseph Alston, 54, chased and rammed a gang's getaway car yesterday after they had robbed him of a brief case containing £400 outside his home in Addington Square, Camberwell, London.

During the half-mile chase in Brixton, the three-man gang twice stopped Mr Alston's car and smashed the windscreen, but he continued the chase. One of the raiders received an injured hand.

The gang fled on foot with the briefcase. Mr Alston then called the police.

SALMON DISEASE STRIKES AGAIN

Representatives of the Cumberland and Westmorland Angling Alliance are planning an emergency meeting to discuss the worst salmon fishing season for 40 years on the River Eden. Fungus disease has reappeared.
Fly Fishers' Club, which has rights on three miles of the river at Warwick Bridge, took only 100 fish in the spring run, compared with an average of 300 to 400 a year.

Barnardo's is peace of mind.

Emotionally disturbed children often live in their own world. Barnardo's help them adjust to life, with education and care. And, above all, love.

Barnardo's children: Healthy, Handicapped, Babies, Teenagers, Coloured, White, Children with parents, Children without parents. But all in need of care. Please help.

Help Barnardo's help a child, please.

Send your donations today!
To: Dr. Barnardo's, Dept. 632, Tanners Lane, Barkingside, Ilford Essex.
also at: 22 Drumshough Gardens, Edinburgh EH3 7RP

NAME _____
ADDRESS _____

8DT6
To Servovarm Information Service Servotomic Ltd, FREEPOST London, W3 7ER
OR RING 01-743 9638 OUR 24 HOUR DIAL A BROCHURE SERVICE

SERVOWARM Big Value CENTRAL HEATING

LOW, LOW PRICE!
Servovarm offers you all the warmth and comfort you'd expect from top class central heating plus all the hot water you can use. Servovarm prices start at only £255* not bad when you remember it adds considerably to the value of your house. And the terms we offer can be arranged to fit comfortably into your budget. *excluding gas connecting charge

REVOLUTIONARY NEW BOILER Wall mounted
At the heart of the system is an entirely new concept in boiler design - to keep running costs low. It can even be hung on the wall!

IT'S TAILOR MADE FOR YOU Servovarm "made to measure" systems are tailored to give you exactly what you want from your heating system. And there will be no waiting or messing about either. Your system will be dealt with quickly and efficiently by expert installers.

A name you can trust
Servovarm is the country's largest installer of central heating - well over 120,000 systems so far - and are members of GKN - Europe's largest engineering group, your assurance of the highest quality and workmanship. In addition each Servovarm system is fully guaranteed. All this plus an installation and service facility second to none have made Servovarm Britain's No. 1 in central heating today.

SERVOWARM - NO 1 IN GAS CENTRAL HEATING

Post this coupon today for your free colour brochure and prices. Postage will be paid. NO STAMP REQUIRED.

NAME _____
ADDRESS _____

POST TODAY

COMPAN HIGHLIGHTS

Tower Assts joins bidding for Ballhaus

REPORTED only last week... Tower Assts has been successful in bidding for the Ballhaus...

Less from more at North

ALTHOUGH during 1970 its pre-tax profits edged up 3 p.c. from £24,554 to £26,122 James North...

IOV still ahead

ALTHOUGH the sales growth of IOV in the second half of 1970...

Anal. Power outback

PRE-TAX profits of Amalgamated Power Engineers fell faster last year than they did in 1969...

Lead and Alloys fall

OUR POINTS more on the dividend but pre-tax profits down...

Man pays more

EXPANSION programme is only paying off at Martin's...

from A D Intl.

WARD of A D International has added a point to the 1970 pre-tax profits...

Man-style

about the 1970-71... a Fulham is the name of the clothing and corduroy specialist...

St. static

NEW YORK stock market fell tempt buyers yesterday...

INVESTMENT AND BUSINESS

CITY EDITOR: KENNETH FLEET/ 112 QUEEN VICTORIA STREET, LONDON EC4P 4BS / 01-236 8925/9

CASH to buy a privately owned merchant bank

By CLIFFORD GERMAN, Financial Correspondent

COMBINED Austin Samuel Holdings (CASH), whose main asset is two million shares in Texco, is buying the privately owned merchant banking business of Jacobs, Kroll, in a £400,000 share deal.

Deputy chairman takes the helm at Ocean Steam

MR J. LINDSAY ALEXANDER

MR J. LINDSAY ALEXANDER, 50, has been appointed chairman of Ocean Steam Ship on the retirement of Sir John Nicholson.

Vanguard Plant runs into liquidity trouble

By NICHOLAS OWEN

CONCERN about Vanguard Plant's plant hire group which went public only ten months ago...

Cunard takes over Lunn-Poly

By ROLAND GRIBBEN, Business Correspondent

CUNARD'S Hitting deal for the denationalised Lunn-Poly Travel group, confirmed yesterday...

Thoughtful approach

Mr Campbell Adamson, director general of the Confederation of British Industry, feels that the Government is now adopting a more thoughtful approach to the whole coalfield issue.

AP Cement pays out £110,000 in 'handshakes'

THE TWO managing directors who resigned last year from Associated Portland Cement, Britain's biggest cement maker, have received "golden handshakes" totalling £110,000.

New Brighton Tower in hands of Receiver

By TONY FALSHAW

MORE THAN 2,000 shareholders in New Brighton Tower, which once owned a large slice of the Ldgware Road and whose main asset is now the Ardmore International Film Studios in London, will learn today that their company has been put in the hands of a receiver, appointed by the National Westminster Bank.

City-backed FAP to spend £5m on four films

By STELLA SHAMOUN

FIRST Artist Production, the City-backed film concern with four "locked-in" film stars, is deploying each "asset" this year in a four-film production programme costing up to \$12 million (£5 million) in all.

Good progress by M & S

AT THE annual general meeting of Marks and Spencer chairman Mr J. Edward Sieff told shareholders that the company had made "excellent progress up to now" in the first weeks of the year.

Gold price fall in prospect

MOCATTA and Goldsmid, the London-dealing associate of Hambros, says in its monthly report for May that unless there are currency changes soon to justify speculation that lifted the price of gold by two dollars in two months "we see no reason why the price should not return to the earlier levels around \$29."

Daily Telegraph prices service

THE following securities have been added to the list of quotations published on P14. Ampitox (Electrical and radio). Home Holdings "A" (Investment, trusts, formerly financial trusts). J.B. Holdings (Industrials). Runcimen, W. (Shipping). Smiths Enterprises (Industrials). Stanwood (Electrical and radio). Wadkin (Industrials).

Rippon tolls knell for the sterling area

BY THE CITY EDITOR

THE BANK of England will close its doors to pounds from the member governments of the sterling area and their existing holdings which make up the "sterling balances" will be stabilised as part of the terms discussed in Luxembourg last night for British entry into the Common Market.

The promise was made in confidential documents circulated by Mr Rippon in Luxembourg yesterday and accepted by Britain's Six taskmasters after a few minutes' consideration. The essential phrases are the undertaking to align the functions of the pound with those of the Continental currencies. To arrange an orderly and gradual run-down of the official sterling balances after joining, and meanwhile to manage British policies with a view to stabilising the official sterling balances.

Mr Rippon made it clear that the detailed method of winding up the sterling area and paying off the £2,500 million or so now banked by sterling area member States in London would only be considered after Britain joins the Community. It leaves open the question of details; but it seems certain that Britain will require a massive funding operation extending over a period of up to 20 years, to provide the foreign currency needed to redeem foreign-owned sterling. Britain, in turn, would have to repay foreign currency out of annual current account surpluses.

Beatrix gives EMI a lift

ARE Pigling Bland, Jeremy Fisher and the Two Bad Mice joining EMI? No, but the film "Tales of Beatrix Potter" is giving a valuable psychological and useful boost to the company's fortunes. In 10 weeks at London's ABC cinema in Shaftesbury Avenue this delicate and delightful film has taken more than £80,000 at the box office. It has to make way tomorrow for the royal charity premiere of "Wuthering Heights," but in three or four weeks it will be back, no doubt to continue packing in both the curious and the committed.

Dollar Land test for Ombudsman

IF THE Ombudsman (Parliamentary Commissioner) finds no fault with the Department of Trade and Industry's refusal to investigate Dollar Land then it will prove itself as ineffective an institution as the inspectorate of the D.T.I. When the Companies Acts have been broken as often and as flagrantly as in the case of Dollar Land it is difficult to see how those charged with policing the Acts can avoid the accusation of lethargy at least.

Table with 3 columns: Category, 1970, 1969. Rows include Turnover, Profit before tax, Profit after tax, Dividends, Profit retained for the year.

COSTAIN logo and text: COSTAIN is one of Britain's major building and civil engineering groups and its biggest overseas contractor. Copies of the Report and Accounts may be obtained from the Secretary, Richard Costain Limited, 111 Westminster Road, London, SE1.

COMPANIES

RESULTS

Edgar Pickering
EDGAR PICKERING (Blackburn), maker and supplier of machinery to the tanning industry, has done better in the second half of its financial year than expected...

Prop. & Reversionary

SEARPLY higher profits and a bigger dividend are announced by Property and Reversionary Corporation. A final dividend of 11 1/2 p.c. payable July 31 makes the total for the year, against equal to 12 p.c. last time.

IN BRIEF

Hollam Sleight and Cheston: Profit 29,383 (loss £13,102), surplus on sale of fixed assets £124,110 on sale of terminal trading losses (£17,082) less terminal trading losses (£17,082) (nil). Dividend 2 p.c. (nil).
Hongkong and Far Eastern Investment: Second interim 9 p.c. investment of £14 smaller capital. Board proposed 1-for-10 scrip issue and 1-for-8 rights issue at 15s 6d.

BIDS AND DEALS

Barber Textile
SPIRELLA Group is making a £688,000 cash bid for Barber Textile Corporation. The offer agreed by both sides is 13p cash for each Ordinary Share in Barber, quoted in the market around 10p.

Jessel Securities

JESSEL SECURITIES has agreed to sell three million shares of the company's ordinary shares.

Labes and Wandeside Cable Works-to Delta. The company has done better in the second half of its financial year than expected...

S. Noton

THE BOARD of the Crown and Victor Luxazee maker S. Noton has had second thoughts. They have agreed to take over terms for the company with Barrow, Hepburn and Gale early in May, but last week this offer was dropped...

Vasasseur-Price

RECENT STRENGTH in the shares of timber and wood pulp giant Price and Vasasseur has led to a merger. The announcement that Price and Vasasseur have agreed to merge has led to a merger...

CHAIRMEN

Associated Portland Cement: Sir John Reiss: Immediate prospects of a return to the normal 5 p.c. growth in home trade demand do not seem at all bright and it is in this context that our overseas operations are becoming more important each year...

Richard Costain

Sir Robert Taylor: The profit from general trading in 1970 was the highest ever recorded by the group and 1971 is expected to produce a comparable figure but the profit from property sales is unlikely to be as great as in 1970...

General Electric

NEW EXPORT orders were up 10 p.c. to £258 million in the year ended March 31. General Electric announced a dividend of 10 p.c. for the year...

showed a less dramatic rise, up 5 p.c. to £210 million. The biggest single new order was the 220 million share GEC Power Engineering has in a nuclear power plant being built in Korea. New orders to £31 million. East orders rose £10 million to £28 million.

MINING

Zandpan

ZANDPAN has intersected the gold and uranium bearing Vasil Reef in its No. 2 shaft at a depth of 254 metres. A full exposure of reef was sampled and averaged 4.149cm/gram of gold and 19.0cm/kg of uranium oxide over a channel width of 31.6cms.

CHAIRMEN

Associated Portland Cement: Sir John Reiss: Immediate prospects of a return to the normal 5 p.c. growth in home trade demand do not seem at all bright and it is in this context that our overseas operations are becoming more important each year...

Richard Costain

Sir Robert Taylor: The profit from general trading in 1970 was the highest ever recorded by the group and 1971 is expected to produce a comparable figure but the profit from property sales is unlikely to be as great as in 1970...

General Electric

NEW EXPORT orders were up 10 p.c. to £258 million in the year ended March 31. General Electric announced a dividend of 10 p.c. for the year...

has conformed to our expectation that there should be no material change in the current year's results apart from the possible effects of consolidating the figures of associated companies...

ROAD HAULAGE

ROAD HAULAGE rates are expected to be increased by 5 p.c. to 10 p.c. over the next few weeks. Hauliers blame increased costs and inflation for the increase...

APPOINTMENTS

G. H. Downing and Co. manufacturers of clay products for the building industry are going through a substantial board shake-up following a re-examination of operations and a consultancy look at the organisation...

Richard Costain

Sir Robert Taylor: The profit from general trading in 1970 was the highest ever recorded by the group and 1971 is expected to produce a comparable figure but the profit from property sales is unlikely to be as great as in 1970...

General Electric

NEW EXPORT orders were up 10 p.c. to £258 million in the year ended March 31. General Electric announced a dividend of 10 p.c. for the year...

Road hauliers to raise charges by up to 10pc

By ROBERT BEDLOW, Transport Correspondent

ROAD HAULAGE rates are expected to be increased by 5 p.c. to 10 p.c. over the next few weeks. Hauliers blame increased costs and inflation for the increase...

APPOINTMENTS

G. H. Downing and Co. manufacturers of clay products for the building industry are going through a substantial board shake-up following a re-examination of operations and a consultancy look at the organisation...

Richard Costain

Sir Robert Taylor: The profit from general trading in 1970 was the highest ever recorded by the group and 1971 is expected to produce a comparable figure but the profit from property sales is unlikely to be as great as in 1970...

General Electric

NEW EXPORT orders were up 10 p.c. to £258 million in the year ended March 31. General Electric announced a dividend of 10 p.c. for the year...

THE QUESTOR COLUMN

Peter Welham Peter Duffy

Upside potential still in Martin the Newsagent

MARTIN the Newsagent's interim results have to be compared with a comparatively depressed first half last year. There is no mistaking the underlying trend and it will not match the second half first were rightly shrugged off by the market...

Lead & Alloys shows confidence

FULL results from Lead and Alloys (Holdings) for the year to March 31 demonstrate why the market is not much like metal traders and processors, and why their shares are awarded such lowly price/earnings ratios...

IDV falls a little flat

WHATEVER the league tables may say about International Distillers' merits as a long-term investment, interim results for the four months to Jan. 31—the second four-monthly period—as flat as a glass of yesterday's champagne. Sales for the period are 7 p.c. up on the previous period, but the gross pre-tax profit is marginal, pointing to pressure on margins...

Deals stopped for Laverton Nickel inquiry

THE LATEST Australian exploration company to join the suspended quotation list is that one-time platinum favourite Laverton Nickel. The Sydney Stock Exchange yesterday suspended dealings and announced it had "quarried" certain undisclosed matters with the company...

Brokers foresee growth in hotels

BROKERS Hoblyn Dix Maurice and Anderson are optimistic about growth in the British hotel industry. "The preliminary figures are that in 1971 a further substantial rise will be seen and the trend will be maintained for at least the next two to three years," they say...

Deals stopped for Laverton Nickel inquiry

THE LATEST Australian exploration company to join the suspended quotation list is that one-time platinum favourite Laverton Nickel. The Sydney Stock Exchange yesterday suspended dealings and announced it had "quarried" certain undisclosed matters with the company...

Deals stopped for Laverton Nickel inquiry

THE LATEST Australian exploration company to join the suspended quotation list is that one-time platinum favourite Laverton Nickel. The Sydney Stock Exchange yesterday suspended dealings and announced it had "quarried" certain undisclosed matters with the company...

Deals stopped for Laverton Nickel inquiry

THE LATEST Australian exploration company to join the suspended quotation list is that one-time platinum favourite Laverton Nickel. The Sydney Stock Exchange yesterday suspended dealings and announced it had "quarried" certain undisclosed matters with the company...

Deals stopped for Laverton Nickel inquiry

THE LATEST Australian exploration company to join the suspended quotation list is that one-time platinum favourite Laverton Nickel. The Sydney Stock Exchange yesterday suspended dealings and announced it had "quarried" certain undisclosed matters with the company...

Deals stopped for Laverton Nickel inquiry

THE LATEST Australian exploration company to join the suspended quotation list is that one-time platinum favourite Laverton Nickel. The Sydney Stock Exchange yesterday suspended dealings and announced it had "quarried" certain undisclosed matters with the company...

Deals stopped for Laverton Nickel inquiry

THE LATEST Australian exploration company to join the suspended quotation list is that one-time platinum favourite Laverton Nickel. The Sydney Stock Exchange yesterday suspended dealings and announced it had "quarried" certain undisclosed matters with the company...

Deals stopped for Laverton Nickel inquiry

THE LATEST Australian exploration company to join the suspended quotation list is that one-time platinum favourite Laverton Nickel. The Sydney Stock Exchange yesterday suspended dealings and announced it had "quarried" certain undisclosed matters with the company...

Deals stopped for Laverton Nickel inquiry

THE LATEST Australian exploration company to join the suspended quotation list is that one-time platinum favourite Laverton Nickel. The Sydney Stock Exchange yesterday suspended dealings and announced it had "quarried" certain undisclosed matters with the company...

Deals stopped for Laverton Nickel inquiry

THE LATEST Australian exploration company to join the suspended quotation list is that one-time platinum favourite Laverton Nickel. The Sydney Stock Exchange yesterday suspended dealings and announced it had "quarried" certain undisclosed matters with the company...

St Michael's Marks & Spencer Ltd. Another year of intensive growth. Sales: £416,685,000. Profits: £50,115,000. The 45th Annual General Meeting of the Company was held at the Dorchester Hotel, Park Lane, London, W.1, on Monday, 7th June, 1971. The following are extracts from the statement by the Chairman, Mr. J. Edward Siff:

AMERICAN COMMODITIES. GOLD PRICE, EURO DOLLARS, LOAN RATES, BANK RATE, FINANCE HOUSES BASE RATE, LOCAL AUTHORITY, WINTERING, etc.

GUARDIAN BUILDING SOCIETY. WILL ACCEPT INVESTMENTS SUBJECT TO THREE MONTHS WITHDRAWAL NOTICE AT AN INTEREST RATE OF 5 1/2% Equivalent to a gross return, if you pay income tax at the full standard rate, of 6 3/4% FOR AMOUNTS FROM £1,000-£20,000. (Husband and Wife £20,000). Centenary Year. Assets over £75 millions. Established 1871. Member of the Building Societies Association. Registered in England. 120 High Holborn, London, WC1V 6RH - Telephone: 01-242 0811

COMMODITIES

Frightened bears run up the copper price

COPPER featured commodity market yesterday with sharp £10 a ton rally on heavy short covering by a few frightened bears...

LONDON METAL MARKETS: Tin eased £5 a ton yesterday... Copper closed 50 points higher...

IRON TEA AUCTIONS: 122200 tons of iron tea... 122200 tons of iron tea...

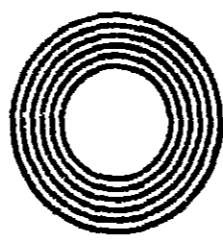
IRON CHAIN MARKETS: 122200 tons of iron chain... 122200 tons of iron chain...

WHEAT MEAT: 122200 tons of wheat meat... 122200 tons of wheat meat...

WHEAT: 122200 tons of wheat... 122200 tons of wheat...

UNIT TRUST PRICES

Table of Unit Trust Prices with columns for Name, Price, and % Change. Includes sections for ARCADUS UNIT MANAGEMENT, M. & G. GROUP, and various other trusts.



BLUE CIRCLE GROUP

The Associated Portland Cement Manufacturers, Limited the parent company

Sir John Reiss reviews Group's world-wide activities

Results in 1970 show gratifying improvement Home market difficulties continue - growing importance of overseas operations

The 72nd Annual General Meeting of The Associated Portland Cement Manufacturers, Limited will be held on July 8th at 21 Tophill Street, London, S.W.1.

After the disappointing results in 1969, it is now pleasing to report an improved profit situation in 1970. The improvement in trading profits has been somewhat obscured in the Group accounts by the change in status of the Mexican companies...

On the face of the accounts, the turnover of the Group in 1970 only marginally exceeded the 1969 figure, and the trading profit after depreciation was £377,000 higher. As the Mexican companies are no longer subsidiaries and are therefore excluded from the 1970 figures, the true increase in turnover is over £12.5 million and in trading profits over £3.7 million.

In the Parent Company, turnover has increased by £10 million although the tonnage of cement sold is slightly lower than that achieved in 1969, and the trading profit after depreciation has increased by £4,531,000. The profit on grey cement however only amounts to 6% on the capital employed, the figure for 1969 being 21%.

Mr. Colin Barker resigned from the Board at the end of the year to take up another appointment. We wish him well in his new post.

PAST YEAR: Thanks to the increases in price which we obtained at the end of 1969 and in April and October last year, the Home trade results show a very different picture from the previous year.

Part from cost escalation, we had to contend with the continuing depression in the building industry. Our deliveries last year were in fact slightly down on the previous year which, you will remember, were about 21% down on 1968.

The coming stream of Northfleet and Hope works has given us the flexibility to run at a much higher percentage of capacity than during the last few years, irrespective of the demand.

Our Special Products did quite well under difficult conditions but Sand and Gravel continued to suffer from the poor demand in the Midlands.

THIS YEAR: Owing to the exceptionally good winter and spring weather deliveries are at present well ahead of last year but we cannot expect this to be the case by the year end.

Costs which are not under our control have continued to rise since last October: at an accelerating pace, and it was with great regret that we have had to announce a further increase in price before the middle of the year. We realise how

difficult these frequent changes in prices are for our customers and we were therefore glad to be able to give an unconditional undertaking this time that prices would be held firm for at least twelve months - this, we hope, will go some way towards mitigating its effects on the hard-pressed building industry.

Hope is now exceeding its rated output and at Northfleet no. 4 kiln came in in March, no. 5 will be fired in early July and no. 6 is expected to be operating in October.

OVERSEAS COMPANIES: The year under review was one of continued progress in almost all areas, cement deliveries by those companies in which we have an interest increasing by 30% to 9,000,000 tons.

In New Zealand the economic situation is to a certain extent similar but, as I mentioned in my Statement last year, we have now taken a 50% interest in our largest competitor in the country, Wilson's (N.Z.) Portland Cement Company Limited.

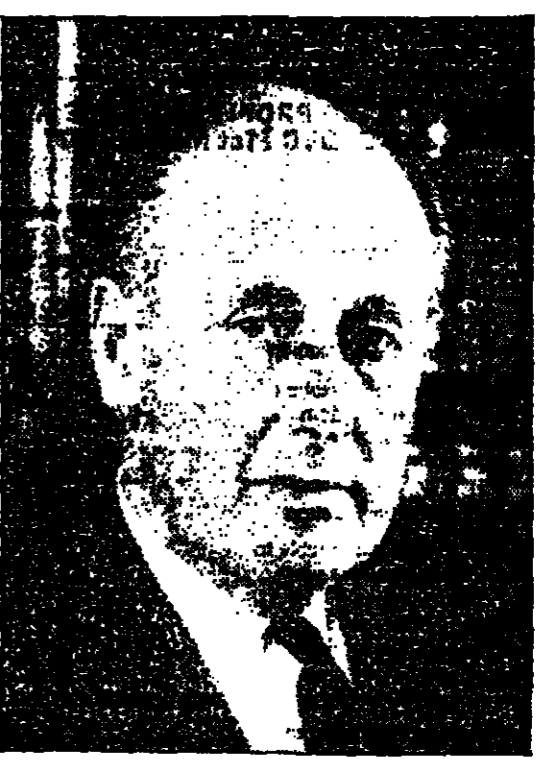
During the year the Company made further progress with its diversification programme, including a major investment in a property development, Damansara Developments.

IN CANADA: I regret to say that there is a different story to tell from those of our other overseas companies. In the middle of April a strike in the building industry halted all construction work in the Vancouver area which is, of course, by far the largest market in the Province.

IN TANZANIA: The quite exceptional circumstances that had such a bad effect on profits in 1969 are now behind us. Let's hope that the artificial conditions of price control under which they arose will not happen again.

Unfortunately, the immediate prospects of return to the normal 5% growth in Home trade demand do not seem at all bright and it is in this context that our Overseas operations are becoming more important each year.

IN CONCLUSION: The quite exceptional circumstances that had such a bad effect on profits in 1969 are now behind us. Let's hope that the artificial conditions of price control under which they arose will not happen again.



On the new 600,000 ton kiln was accelerated to the greatest extent possible. We are expecting the first output from this kiln in August this year which, together with the expansion of capacity being undertaken by our competitors, will be more than sufficient for the local market for the immediate future.

Our Rhodesian company, the Salisbury Portland Cement Company, produced to capacity during the course of the year, the building industry in Rhodesia continuing to operate at a high level.

The year 1970 in Nigeria saw a resumption of normality after the end of the civil war and a return to the arduous process of reconstruction. Following the major increase in oil royalties and the general improvement in the country's economic situation, a large rehabilitation programme has been put in hand which has thrown considerable strain on the ability of cement producers in Nigeria to supply the country's requirements.

In Spain, work continued on the expansion of the Villaluenga plant near Madrid. The company's sales increased over the previous year, and we are looking to further growth in output and earnings during 1971.

In my Statement last year I made reference to the difficulties which our Malaysian company was experiencing following the disturbances in May of the previous year, which had had the effect of reducing the rate of capital investment in the country with a consequent reduction in the rate of building.

During the year the Company made further progress with its diversification programme, including a major investment in a property development, Damansara Developments.

During the year the Company made further progress with its diversification programme, including a major investment in a property development, Damansara Developments.

During the year the Company made further progress with its diversification programme, including a major investment in a property development, Damansara Developments.

During the year the Company made further progress with its diversification programme, including a major investment in a property development, Damansara Developments.

London Electricity

Chief Instructor Technical Staff Trainees Basic Workshop Training

If you are interested in working with young men with five years training your experience to help prepare them to become professional or technician engineers? London Electricity are seeking a Chief Instructor for their Technical Staff Trainees Basic Workshop Training based at 44 Pratt Street London NW1 0EJ.

The applicant (who will rank with Chief Instructors charge of different sections) will be engaged on the following Mechanical Engineering both Practical and Theoretical. In particular he will be required to instruct in General Machine Tools, Turning - Grinding - Grinding - Drilling and the appropriate fitting of a Machine Tool Section.

He should be a skilled craftsman, and have served a cognate apprenticeship. The possession of a formal Certificate qualification would be an advantage together with previous experience in light and manufacturing project work with potential students. He will normally be instructing young men in the early part of their training for the Electrician's Engineering Posts, a number of whom will be on Sandwich Degree Courses.

Salary N.J.B. Grade 8 £2051 to £2537 per annum plus pension.

A successful candidate will be required to work 40 hours as may be required in order to effectively supervise the trainees under instruction.

Applications, giving full details, should be sent direct to the Personnel Manager 46 New Broad Street London EC2M 1LS.

NORTHROP/PAGE COMMUNICATIONS ENGINEERS, INC.

An international leader in telecommunications systems has undertaken a major long-term telecommunications project to serve the entire nation of Iran known as the "Integrated National Telecommunications System" (INITS). We are looking for young men in good physical condition who can bear hardship, work in isolated areas, and shift for themselves, when necessary. Unlimited pay offered as single accommodation only is available. No relocation of family is possible.

Immediate requirement exists for the following positions:

FIELD ENGINEERING TECHNICIAN (ELECTRONICS)

will be assigned to an area maintenance office in support of the assigned electronic technicians in the maintenance and operations of a major broadband telecommunications network. Must have experience and use performance analysis techniques to isolate and correct problems brought about by RFI, Propagation, Intermodulation, Wiring, etc.

SENIOR ELECTRONIC MAINTENANCE AND OPERATIONS TECHNICIAN

must be able to support up to thirty unattended radio multiplex sites in a broadband multi-link LOS system.

ELECTRONIC MAINTENANCE TECHNICIAN

Must be able to support up to thirty unattended radio multiplex sites in a broadband multi-link LOS system.

HEATING VENTILATING ENGINEER

Must have experience in designing ventilation for AC power, air conditioning, fuel transfer systems, hot water heating systems, central heating systems. This will be based on calculating heat gains and losses on buildings and equipment based on meteorological data and equipment descriptions. Some experience and 5 years experience in related subjects.

Page representatives will be in London on 9, 10, 11, 12, and 13, June to conduct personal interviews. Qualified applicants are requested to call Mr. Sokoloff at 01-499 6263 after 8.30 for interview appointments.

NORTHROP/PAGE COMMUNICATIONS ENGINEERS, INC., P.O. BOX 3380, TEHRAN, IRAN.

NAVAL VESSEL DESIGN

Vesper Thornycroft Limited is engaged in designing, developing and building an entirely new range of fast destroyers for a number of different navies. These vessels will be constructed at our Woolston Shipyard, where the most modern production techniques are fully used. Design work on these warships demands the experience of qualified men with a sound shipbuilding background.

DESIGN MANAGER, ELECTRICAL/WEAPONS

The successful applicant will be responsible for approximately 100 design and drawing office staff engaged in the development of designs for the electrical and weapons installations of modern warships. He should be qualified to at least HNC standard and must have had considerable previous management and technical experience in the marine electrical/weapons field. Ref. WS-Tech/109

ASSISTANT MANAGER, ELECTRICAL/WEAPONS

To be responsible to the Design Manager for the electrical/weapons installations of specific ship projects. He should be qualified to at least HNC standard and must have had management and technical experience in the marine electrical/weapons field. Ref. WS-Tech/110

Salary commensurate with responsibilities. Staff conditions include non-contributory Pension Scheme, free Life Assurance and a relocation scheme providing assistance towards legal fees, removal expenses and lodging allowance.

Please apply in writing, quoting the appropriate reference, giving brief details of age, experience and current salary to:

The Personnel Manager,
Vesper Thornycroft Ltd.,
Victoria Road, Woolston, Southampton SO9 5GR.

A subsidiary of the David Brown Corporation Limited.

Science Research Council ATLAS COMPUTER LABORATORY COMPUTER STAFF

The OPERATIONS GROUP requires computer operators for the ICT ATLAS installed at Chilston, and an ICL 1906A to be installed mid 1971. The Atlas Computer Laboratory provides a service to British Universities and deals with a wide range of computer work for a large number of scientific research workers in many different fields; e.g. physics, chemistry, biology and engineering.

The duties include the handling of punch cards, paper tape, magnetic tape and the use of ancillary equipment associated with these large computer systems.

Applicants should be aged 18 years or above. They will work under supervision as members of a large operating team on a shift basis. Previous experience of large computer operation would be a distinct advantage.

There are possibilities that some candidates may be selected for training and employment on programming duties.

The appointments will be made in the following grades:-

SCIENTIFIC ASSISTANTS

Qualifications
Applicants should have gained at least four General Certificates of Education at Ordinary level including English Language, plus two Mathematics subjects or one Mathematics and one Science subject (preferably Physics).

Salary
£520 age 18, £585 age 21, £1,075 age 25 and above, rising by annual increments to a maximum of £1,545.

A shift allowance, in addition to salary, is payable.

ASSISTANT EXPERIMENTAL OFFICERS

Qualifications
Degree or HNC in an appropriate subject. Under age 22 minimum qualification is General Certificate of Education in five subjects including two Scientific/Mathematical subjects at Advanced level.

Salary
£735 age 18, £1,015 age 21, £1,405 age 26 and above, rising by annual increments to a maximum of £1,680.

A shift allowance, in addition to salary, is payable. There is a contributory superannuation scheme; daily travel and restaurant facilities are available. Please write or telephone for an application form to Mr. P. B. Nichols, the Rutherford Laboratory, Chilton, Didcot, Berkshire. (Aberdeen 1960 extn. 510). Ref. AL 62-1. Closing date: 17 June, 1971.

LEEB

Senior Agronomist

Caroni exists for a Senior Agronomist in Caroni. The Company is the major sugar producer in Guyana and maintains a Research Station which carries out investigations into the agricultural problems of sugar industry.

Experienced Agronomist or Agricultural Botanist is required to lead a programme of research into the growing of sugar cane. The programme will include variety selection, plant nutrition, cultural practices and herbicide trials. Some work will also be conducted on forage in relation to livestock feeding.

Candidates should have a good Honours degree in a natural science and at least 10 years' experience in agricultural research. Previous experience with sugar cane is not essential but experience in one or more plantings would be advantageous.

It will depend on the qualification and experience of applicants. Furnished accommodation will be provided, and medical schemes are offered. Satisfied persons should apply in writing, submitting details of age, training and experience and the names of referees not later than 30th June, 1971, to:

PERSONNEL MANAGER, CARONI LIMITED, COUVA, TRINIDAD, WEST INDIES.

LEE CONSERVANCY CATCHMENT BOARD

Challenging work for Engineers

Involving a major capital works programme, which includes a tidal barrier to be completed in 18 months, and water resources matters.

the posts	the salaries
Designated Engineer	£3,456-£3,888
Chartered Engineers	£2,196-£3,039
Graduate Engineers	£1,605-£2,358

Details and application forms may be obtained from:

D. T. Addyman, T.D., F.I.C.E., F.I.W.E., Engineer to the Board, Lee Conservancy Catchment Board, The Grange, Crossbrook St., Chesnut, Herts. Waltham Cross 27881.

BOWATER PACKAGING LIMITED

Production Management

An immediate vacancy exists in the Production Management Division of our Flexible Packaging Division. The Division is organised on a double shift basis and we require someone to control the operation of one shift.

He will be directly responsible to the production manager and will have close contact with operators, maintenance, and all areas that the shift operator is directly in accordance with laid down policies and systems.

We are looking for a man of degree standard aged 27-30 with a bias towards science or engineering.

Experience of work study techniques would be an advantage as would experience of process industry, but the emphasis is on man-management skills and supervisory experience; then fore essential. A qualification in supervisory studies would be welcomed. Prospects are good for future advancement in production management.

The Gillingham plant is one of the most modern in Europe with over 800 employees and is situated in pleasant surroundings overlooking the River Medway.

This is a monthly staff appointment with the benefit of just class working conditions including a contributory superannuation and life assurance scheme. Assistance will be provided with relocation expenses.

Please write giving full details of age, experience and salary progression to:

R. W. Brough, Personnel Manager, Bowater Flexible Packaging Limited, Gillingham, Kent.

Chief Designer

Coventry Climax invite applications from suitably qualified engineers for the above position.

The Chief Designer is required to lead a team of designers and draughtsmen engaged on the design of a range of diesel, petrol and electric fork trucks having capacities of 2,000 lbs - 18,000 lbs.

We consider the ideal applicant will be a qualified engineer who has had a sound practical training coupled with qualifications to at least H.N.C.

He should be between the ages of 35-45, and have held a responsible position in the design office of a manufacturer of mechanical handling equipment or of specialist heavy duty vehicles.

Applicants should send full details of experience, age and salary progression to The Technical Director, Coventry Climax Engines Limited, Sandy Lane, Coventry, CV1 4DX, Warwickshire.

BRITISH LEYLAND Climax

Meccano Triang Limited REQUIRE SALESMEN

for the following areas:
SOUTH WALES, LIVERPOOL & MANCHESTER

Applications are invited from men with previous selling experience between 25 and 35 years of age. Salary plus commission, expenses and contributory pension scheme. All the above positions merit a Company Car together with usual benefits. Applications in writing to:

U.K. Sales Manager, Meccano Triang Ltd., Binns Road, LIVERPOOL L13 1DA.

Exciting and challenging opportunities for Senior Management Personnel now exist with MAKRO, where the right people can become involved in the organisation and running of MAKRO'S revolutionary cash and carry stores. When MAKRO came to Britain a short while ago, they brought with them a revolution in wholesaling techniques; 35,000 products for sale in the most modern, streamlined surroundings and employing up-to-date sophisticated management techniques.

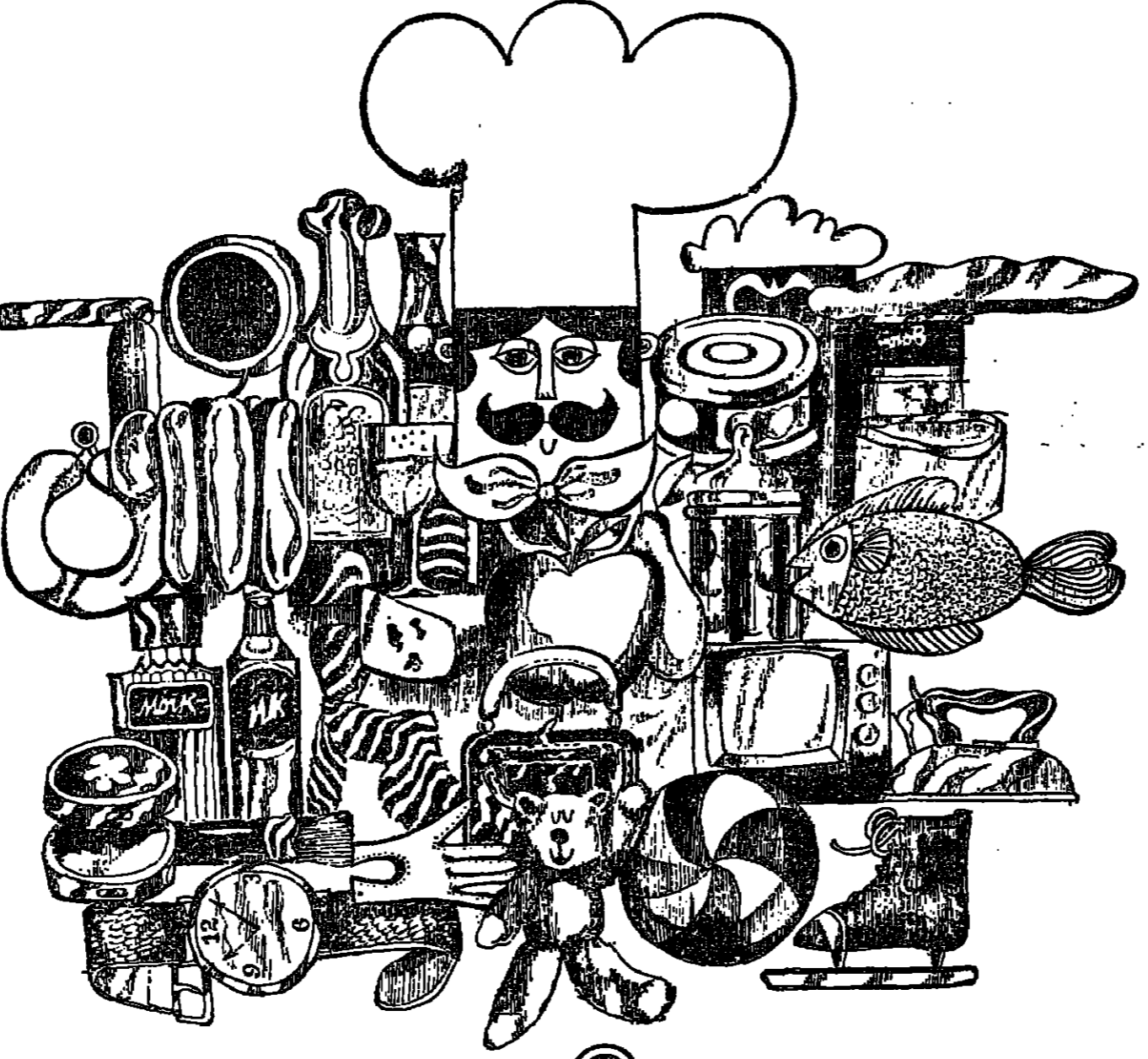
MAKRO/METRO GROUP already has 22 stores successfully operating in Holland, Belgium, Germany, Austria and France, together with others which are nearing completion in Denmark, Spain and South Africa. Opportunities for top calibre personnel to join the International Staff of this progressive organisation are unlimited. These positions could involve extensive world travel.

MAKRO, one of the most progressive employers in the U.K. offer their employees excellent salaries and top class fringe benefits.

SENIOR MANAGEMENT PERSONNEL

Store Managers Ref: 79/1

These are executive positions offering challenging futures to senior managers with previous experience in a large store. Store Managers will be in charge of a mixed labour force of 300 personnel. They will assume control of, and be responsible for, the total effective operation of the store, liaising with national management in order to ensure the maximum utilisation of all available resources.



makro

THE WORLD'S LARGEST CASH & CARRY WHOLESALER

has recently opened it's first U.K. store and headquarters at Eccles Manchester and is soon to open stores in many of our major cities

Floor Managers Food and Non-Food Ref: 79/2

These positions offer ideal opportunities to personnel with managerial experience in a large store. Responsible directly to the Store Manager, they will control a labour force of between 130 and 150 and be expected to achieve profitability targets by direction and co-ordination of store activities in food or non-food departments.

National Training Manager Ref: 79/3

This challenging position involves direct responsibility to the National Personnel Manager. Activities will include the implementation and monitoring of all company training activities. Applicants for this appointment must possess detailed knowledge of the standards and requirements of the Distributive Industry Training Board.

National Promotions Manager Ref: 79/4

This senior appointment will appeal to executives experienced in the compilation of advertising material, and who have specialist knowledge of sales promotional activities. Applicants must possess a high degree of initiative and organisational ability.

Applications containing full career details of past and present employment and quoting reference should be forwarded to:

G. G. Taylor, U.K. Personnel Manager, Makro (Cash and Carry) Limited, Liverpool Road, Barton Moss, Eccles, Manchester.

Cleverchange "FOURway TURNabout" coats and suits handtailored saddlestitched about £49.75



BIRTHS

ADAMS—On June 2, in Sydney, to Mrs. J. Adams and Mr. R. Adams, a son (Richard).

MARRIAGES

CHRISTIAN—TOMLINSON—On Saturday, June 3, 1971, at the Parish Church of St. Andrew, London, the Rev. Canon G. G. Christian, M.A., officiating, the Rev. Canon G. G. Christian, M.A., officiating, the Rev. Canon G. G. Christian, M.A., officiating.

No. 14,148 CROSSWORD

- 1 A status symbol (5, 2, 4)
2 Some jam on the turn? (4)
3 Climbing animal that is put into a ship for nomads (7)
4 Majestically employed, reserve units (4)
5 New cadet or old soldier (7)
6 The name of love concealed by one who must renounce (4)
7 The fare from here costs nothing! (4, 7)
8 What skippers pay for their ties? (7, 4)
9 Is scarcely a success with the bat, yet puts a unit to flight! (5, 3, 3)
10 Want a meat dish? Try our steak fricassée! (5, 6)
14 A stock choice of three letters (5)
15 Its dusky charmers are embraced by him but not! (5)
19 Singularly consolidated (7)
20 Can and must resort to private study (7)
24 Half the answer for a house-bunter prepared to share a roof (4)
25 Naturally it dives down South to moult! (4)
26 She gets all upset about nothing (4)

Crossword grid with numbers 1-26 and letters A-Z.

SOLUTION NO. 14,147

Yesterday's Quick Solution: ACROSS: 1 Mustard, 3 Seeds, 5 Sharp, 9 Inherit, 10 Claret, 11 Little, 12 Mixed, 14 Craves, 17 Lapse, 19 Capulet, 22 Actual, 23 Devised, 24 Deposited.

For a change on Sundays, try your skill with THE SUNDAY TELEGRAPH prize crossword.

INTERNATIONAL RELIEF FORCE IDEA BY SIR ALEC

By NORMAN KIRKHAM, Diplomatic Staff
SIR ALEC DOUGLAS-HOME, Foreign and Commonwealth Secretary, said last night that Britain should not cut off economic aid to bring pressure on the Pakistan Government for peace in East Pakistan.

AID APPEAL

Continued from Page 1
By a Government announcement it will pay for vaccines, syringes and saline solution sent out by charities.
The first of four RAF flights with anti-cholera medical supplies arranged for this week took off from Wiltshire, yesterday.

Asked whether Britain should not move independently with the United Nations, he said: "We must be advised first by the Indian Government and then by the U.N."

Charity's £6,500 debt

Meanwhile Kastur, the first charity to send off anti-cholera supplies, is facing a £6,500 debt. Its head, Mr. Richard Lejeune, said the charity had no money for syringes, needles and saline drip equipment, which took off for Calcutta on Sunday.

DOWN

- 1 A status symbol (5, 2, 4)
2 Some jam on the turn? (4)
3 Climbing animal that is put into a ship for nomads (7)
4 Majestically employed, reserve units (4)
5 New cadet or old soldier (7)
6 The name of love concealed by one who must renounce (4)
7 The fare from here costs nothing! (4, 7)
8 What skippers pay for their ties? (7, 4)
9 Is scarcely a success with the bat, yet puts a unit to flight! (5, 3, 3)
10 Want a meat dish? Try our steak fricassée! (5, 6)
14 A stock choice of three letters (5)
15 Its dusky charmers are embraced by him but not! (5)
19 Singularly consolidated (7)
20 Can and must resort to private study (7)
24 Half the answer for a house-bunter prepared to share a roof (4)
25 Naturally it dives down South to moult! (4)
26 She gets all upset about nothing (4)

BENN TO VISIT CHINA BY INVITATION

Mr. Anthony Wedgwood Benn, M.P., vice-chairman of the Labour party and a former Minister of Technology, is to visit Peking in September, at the invitation of the Chinese Institute of Foreign Affairs.

BOAC EXECUTIVES IN JOBS CHANGE

By Our Industrial Staff
A BOAC plan to move about 50 executive staff members to other jobs is expected to be discussed at a meeting with unions next week.

SPRING 'CHESTINESS'?

There's lots of it about... YOUR EARLY MORNING TEA CAN HELP... SOME GOOD ADVICE...
There's lots of "Spring Chestiness" about! Middle-aged and elderly people particularly get a sense of Bronchial Congestion, feel short of breath and inclined to "wheeze" and "rattle".

Sterling area has £2,000m in London

By CLIFFORD GERMAN, Financial Correspondent
MORE than £2,000 million is now held in accounts in London by members of the sterling area.

Steady amounts

The total amount held has been remarkably steady over the past decade, despite the loss of confidence in the pound, culminating in devaluation in November, 1967.

Economic union

He added: "We are confident that official sterling can be handled in a way which will enable us to take our full part in the process of creating an economic and monetary union."

French reluctant

The French have been reluctant to see the guarantee extended until Britain had given the undertaking implicit in Mr Rippon's paper yesterday.

Warm tribute

M. Schumann immediately thanked Mr Rippon for the declaration which, he made clear, was fully acceptable to the Six.

Fisheries change

What was needed was a recognition that the policy as it stood should be modified and a clear indication of the way in which the problems can be solved.

Control procedure

The British in-here fishing industry was very large. Fishing grounds were carefully conserved, especially within the six-mile limit.

Control procedure

The British in-here fishing industry was very large. Fishing grounds were carefully conserved, especially within the six-mile limit.

Control procedure

The British in-here fishing industry was very large. Fishing grounds were carefully conserved, especially within the six-mile limit.

Control procedure

The British in-here fishing industry was very large. Fishing grounds were carefully conserved, especially within the six-mile limit.

Control procedure

The British in-here fishing industry was very large. Fishing grounds were carefully conserved, especially within the six-mile limit.

Control procedure

The British in-here fishing industry was very large. Fishing grounds were carefully conserved, especially within the six-mile limit.

RIPPON

By WALTER FARR
Continued from Page 1

The chief negotiating ministers of Eire and Denmark, who had negotiated a deal with Mr Schumann early yesterday, said they were certain that agreement on the main problems for the entry of Britain, Eire and Denmark would be reached early in the summer.

The agreement between Britain and the Six for settlement of the sterling issue came after Mr Rippon had made a statement to the Six, underlining that the sterling balances held by other countries in the sterling zone would be run down after British entry.

In his statement, Mr Rippon said: "We are happy to accept an orderly and gradual rundown of official sterling balances after our accession."

"We shall be ready to discuss after our entry into the community what measures might be appropriate to achieve a progressive alignment of the external characteristics and practices in relation to sterling with those of other currencies in the community in the context of progress towards economic and monetary union in the enlarged community."

He added: "We are confident that official sterling can be handled in a way which will enable us to take our full part in the process of creating an economic and monetary union."

His reference to "official sterling" concerned the sterling balances held by other countries in the sterling zone.

Mr Rippon ended by saying: "In the meantime, we shall manage our policies with a view to stabilising the official sterling balances in a way which would be consistent with these longer-term objectives of the economic and monetary union."

"I hope the community will regard this statement as disposing satisfactorily of the question of sterling and associated matters, leaving only the arrangements for Britain's compliance with the directives relating to capital movements under the Treaty of Rome to be settled in the course of the negotiations."

Warm tribute
M. Schumann immediately thanked Mr Rippon for the declaration which, he made clear, was fully acceptable to the Six.

There would be an exchange of letters between Britain and the Six and these would be needed to give effect to the entry into the Common Market.

Mr Schumann later paid a warm tribute to Mr Rippon for his handling of the sterling problem.

In a statement to the Six on safeguards for Commonwealth sugar, Mr Rippon said he had been able to explain the safeguards to Commonwealth ministers and, in view of the decision reached with them, he was able to accept the community's safeguard proposal, subject to clarification on India.

Mr Schumann replied that the Six took note of Mr Rippon's statement and of the interpretation of the safeguards which had been made by Britain and the 14 Commonwealth countries.

In a statement calling for safeguards for Britain's fisheries industry, Mr Rippon made it clear that the common fisheries policy of the Six will need modification. All the details of the modification need not be settled before the summer holidays.

Fisheries change
What was needed was a recognition that the policy as it stood should be modified and a clear indication of the way in which the problems can be solved.

He asked that the community agree to the fisheries issue being dealt with without delay, even though there need not be agreement on every detail at the next ministerial session on Monday week.

Mr Rippon said, in a working paper on fishery safeguards submitted by his negotiating officials, that the access which fishing vessels of the Community would have to an enlarged Common Market would have to be raised to a level of economic and political importance for Britain, as well as for other countries applying for membership.

Control procedure
The British in-here fishing industry was very large. Fishing grounds were carefully conserved, especially within the six-mile limit.

Control procedure
The British in-here fishing industry was very large. Fishing grounds were carefully conserved, especially within the six-mile limit.

Control procedure
The British in-here fishing industry was very large. Fishing grounds were carefully conserved, especially within the six-mile limit.

Control procedure
The British in-here fishing industry was very large. Fishing grounds were carefully conserved, especially within the six-mile limit.

Control procedure
The British in-here fishing industry was very large. Fishing grounds were carefully conserved, especially within the six-mile limit.

Control procedure
The British in-here fishing industry was very large. Fishing grounds were carefully conserved, especially within the six-mile limit.

Control procedure
The British in-here fishing industry was very large. Fishing grounds were carefully conserved, especially within the six-mile limit.

Control procedure
The British in-here fishing industry was very large. Fishing grounds were carefully conserved, especially within the six-mile limit.

Control procedure
The British in-here fishing industry was very large. Fishing grounds were carefully conserved, especially within the six-mile limit.

Control procedure
The British in-here fishing industry was very large. Fishing grounds were carefully conserved, especially within the six-mile limit.

Control procedure
The British in-here fishing industry was very large. Fishing grounds were carefully conserved, especially within the six-mile limit.

WEDDINGS FOR HIGH YIELD PLATES DEWSBUR 5175

MARRIAGES (Continued)
LAWSON—On June 2, at St. Paul's Church, London, the Rev. Canon G. G. Christian, M.A., officiating, the Rev. Canon G. G. Christian, M.A., officiating, the Rev. Canon G. G. Christian, M.A., officiating.